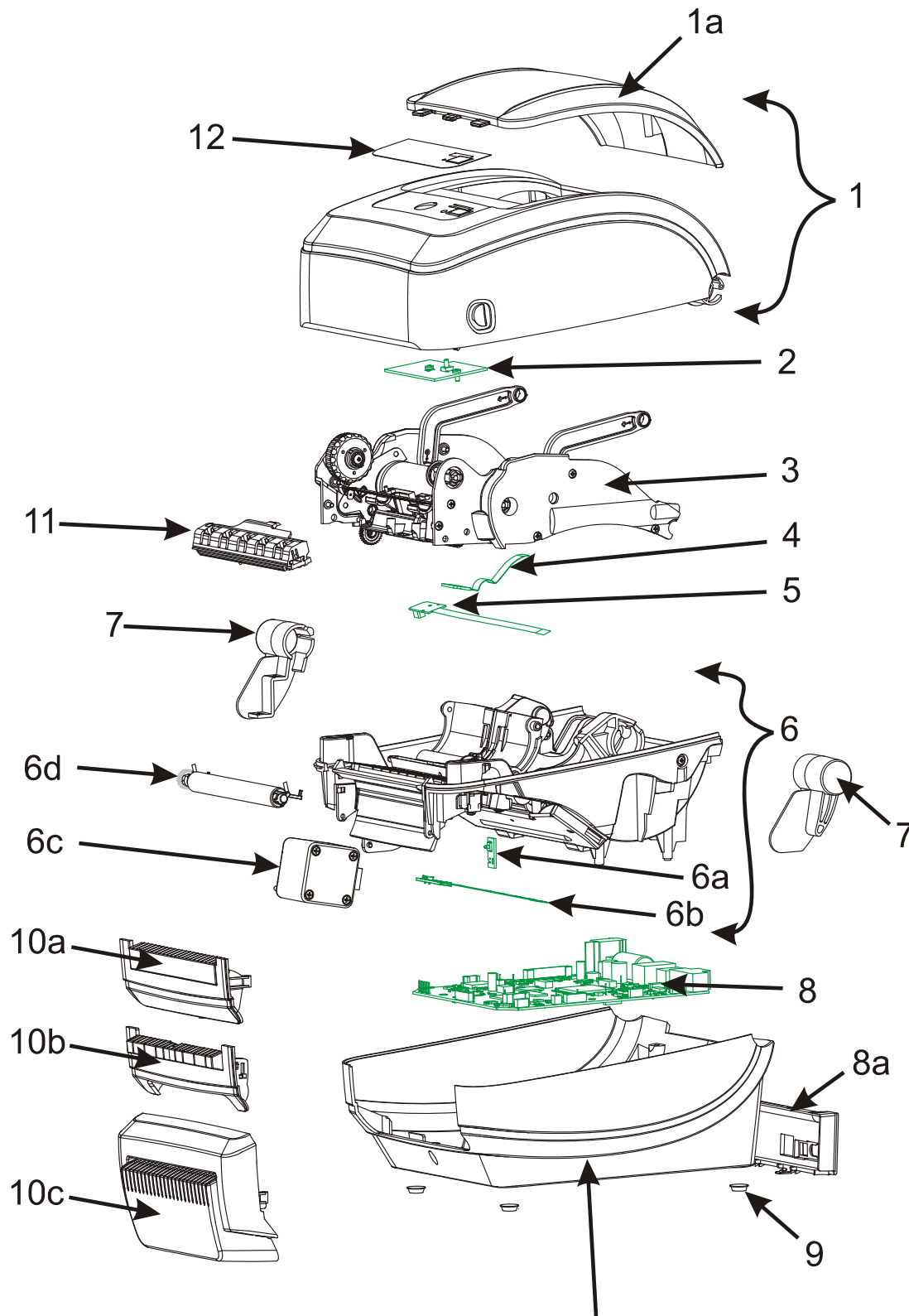


Spare Parts List Desktop Printers

GX430t – GX43-1X2XXX-XXX (The "2" in the 8th digit is the key designator for R2.0 on all G-series)



Note: the printer base is only available through the Zebra Repair Depot.

Spare Parts List Desktop Printers

GX430t - GX43-1X2XXX-XXX (The "2" in the 8th digit is the key designator for R2.0 on all G-series)

Item	Description	Part Number
1	Cover Assy (t) (includes Media Window)	105934-006
1a	LCD Cover Assy (t) (includes Media Window)	Depot Only
	Media Window (t)	105934-002
2	Feed Switch (t)	105934-004
	LCD Display/Feed Switch (with Bluetooth Wireless)	105934-056
	LCD Display/Feed Switch (with 802.11g Wireless)	105934-057
3	Ribbon Carriage, 300 dpi	P1027135-047
4	Upper Gap Sensor, Fixed (t)	P1027135-003
	Upper Gap Sensor, Movable (t)	P1027135-004
5	Ribbon Out Sensor (t)	P1027135-014
6	Print Mech. Fixed Sensor, 300 dpi (t) inc. Gap/Blackline Snsr, Motor, Platen, Head Up Snsr	P1027135-009
6b	Gap/Blackline Sensor, Fixed (t)	P1027135-013
6	Print Mech. Moveable Sensor, 300 dpi (t) inc. Gap/Blackline Snsr, Motor, Platen, Head Up Snsr	P1027135-010
6b	Gap/Blackline Sensor, Moveable	P1027135-012
6a	Head Up Sensor (t)	105934-042
6c	Motor Assy., 300dpi	P1027135-042
6d	Platen, Std (t)	P1027135-040
	Platen Bearings (t)	105934-099
7	Cover Hinge R&L (t)	105934-048
8	GX Main Logic Board, USB/Serial/Parallel, ZBI	P1027135-017
8	GX Main Logic Board, USB/Serial/Parallel, 64M, RTC, ZBI	P1027135-018
8	GX Main Logic Board, USB/Serial/Parallel, 64M, RTC, Liner Tag Cut, ZBI	P1027135-035
8a	Back Panel, USB/Serial/Parallel (t)	P1027135-020
8	GX Main Logic Board, USB/Serial/Ethernet, ZBI	P1027135-021
8	GX Main Logic Board, USB/Serial/Ethernet, 64M, RTC, ZBI	P1027135-036
8	GX Main Logic Board, USB/Serial/Ethernet, 64M, RTC, Liner Tag Cut, ZBI	P1027135-033
8a	Back Panel, USB/Serial/Ethernet (t)	105934-087
8	GX Main Logic Board, USB/Serial/Bluetooth Wireless, 64M, ZBI	P1027135-038
8	GX Main Logic Board, USB/Serial/Bluetooth Wireless, 64M, Liner Tag Cut, ZBI	P1027135-031
8a	Back Panel, USB/Serial/Wireless (t)	105934-090
	Interface Fuse, 1A	105934-076
	Battery, 3V Lithium (set of 10)	G105950-003
9	Rubber Foot (set of 4)	105934-024
10a	Front Bezel, Std (t)	105934-030
10b	Front Bezel, Dispenser (t)	105934-031
10c	Medium Duty Partial Cutter (t)	105934-110
10c	Light Duty Cutter (t)	105934-032
10c	Medium Duty Full Cutter (t)	105934-033
11	Printhead, 300dpi (t)	105934-039
12	Nameplate, GX430t	105934-064
	Nameplate, GX430t with LCD	105934-069

Spare Parts List Desktop Printers

GX420t - GX43-1X2XXX-XXX (The "2" in the 8th digit is the key designator for R2.0 on all G-series)

Item	Description	Part Number
	Shipping Pack (t)	105934-051
	Users CD-ROM	105934-052
	Power Supply, 100W C13 with US & Euro Cords	105934-054
	Power Cord, 120V US C13 (set of 5)	105950-014
	Power Cord, 220V Euro C13 (set of 5)	105950-015
	Power Cord, 240V UK,C13 (set of 5)	105950-030
	Power Cord, 240V AUS C13 (set of 5)	105950-029
	Power Cord, 220V China C13 (set of 5)	105950-078
	Power Cord, 125V Japan C13 (set of 5)	105950-079
	Power Cord, 220V Argentina C13 (set of 5)	105950-080
	Ribbon Core, 4" thermal transfer (set of 50)	P1027135-048
	Service CD-ROM	105950-087