

Mifare[®] Card Issuer

PCR310 programmer for MF700/LBR700 Reader

User's Manual

REV.F

May 29, 2008

Understand the MAD and Non-MAD

Before you operate Mifare Card Issuer (Programmer), you have to know something about MAD and Non-MAD.

| MAD Format Card | | | Non-MAD Format Card | | |
|---------------------------|---------|-------------------|----------------------------------|---------|-------------------|
| MAD Sector(0) | Block 0 | Manufacturer Code | Sector 0 | Block 0 | Manufacturer Code |
| | Block 1 | MAD | | Block 1 | Other User Data |
| | Block 2 | AID(n) | | Block 2 | |
| | Block 3 | Sector Security | | Block 3 | Sector Security |
| | | . | | | . |
| | | . | | | . |
| | | . | | | . |
| Application Sector (n) | Block 0 | User Data | Application Sector (fixed) | Block 0 | User Data |
| | Block 1 | | | Block 1 | |
| | Block 2 | | | Block 2 | |
| | Block 3 | Sector Security | | Block 3 | Sector Security |

When using MAD application, Mifare Application Directory (MAD) is stored at sector 0 for Mifare Standard 1K card (or at sector 0 and sector 16 for Mifare standard 4K card) According to MAD, get AID and its mating Application Sector number. When using Non-MAD application, the parameter of Non-MAD Sector number will directly lead the Application Sector Number.

Card Security will be update as below after issued card:

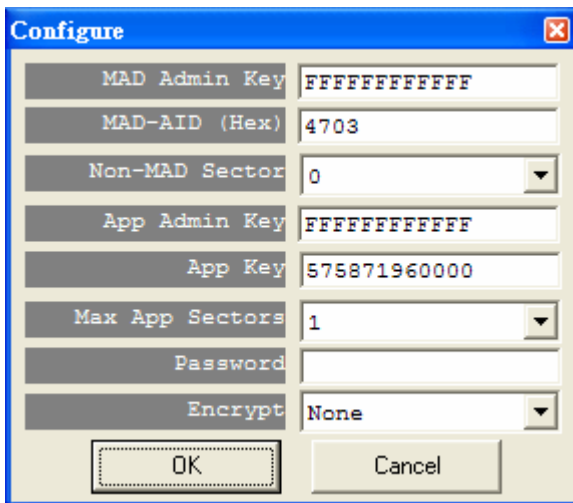
| | | |
|---------------------------|---------|---|
| MAD Sector Sector (0) | Block 0 | Manufacturer Code |
| | Block 1 | MAD |
| | Block 2 | AID |
| | Block 3 | KEY_A ¹ is Read Only, MAD Admin Key ² is Read/Write (KEY_B) |
| | | . |
| | | . |
| Application Sector (n) | Block 0 | User Data |
| | Block 1 | |
| | Block 2 | |
| | Block 3 | App Key ³ is read only (KEY_A), App Admin Key ⁴ is Read/Write (KEY_B) |

1. KEY_A = A0A1A2A3A4A5, this is the fixed KEY of MAD, it can be used for read only.
2. MAD Admin Key is the key for the MAD card issuer to manage MAD card. It can be used for Read and Write.
3. App Key is the key for the MF700/LBR700 reader to read the data or Application Sector. It can be used for Read only..
4. App Admin Key is the key for the Application manager to issue the card and write data into the card. It can be used for Read and Write.

Configure the Parameters of MF700/LBR700 Card Issue

According to MAD or Non-MAD application, you have to set the Card Issuer parameters before issuing the card.

Click [Configure] to begin settings the parameters: (Example as below)



1. **MAD Admin Key** (Default=FFFFFFFFFFFF, KEY_B):

The key is for the Administrator to plan the MAD application and it can assign the AID and its mating Sector number.

2. **MAD-AID** (Hex, Default=4703):

If you have application AID from Mifare MAD group, you may set this AID number into MAD-AID to become the identifier of your application. (or you may assign AID number by yourself for your

application if you did not apply AID from Mifare MAD Group.). The default 4703 is AID for Access Control & Security application of GIGA-TMS INC.

3. **Non-MAD Sector#** (Default=1)

For the Non-MAD application, you have to set Non-MAD Sector number. By means of this setting, the User-Data is written into the Sector of the set Non-MAD Sector number. MF700/LBR700 Reader only can read the data on the set Non-MAD sector if the card is Non-MAD format.

4. **App Admin Key** (Default=FFFFFFFFFFFF, KEY_B):

The key is used for managing the data in the Application Sector. It can be used for Reading and Writing the data.

5. **App Key** (Default=FFFFFFFFFFFF, KEY_A)

The key can only read the data. MF700/LBR700 Reader is using the App Key to authenticate with the card.

6. **Max App Sectors** (Default=1) for multi sectors in use.

7. **Password** (Default=Blank)

The Mifare Card Issuer software is with Logon Password protection. If you set with password, you have to enter Password every time when you execute the Mifare Card Issuer.

8. **Encrypt (Default=None)**

Fraud prevention, Select Encrypt Mode (None, Encrypt 1, Encrypt 2, Encrypt 3, Encrypt 4, Encrypt 5) to protected your card data. (Remark: Encrypt mode must to work together with the same encrypt mode of MF700/LBR700 configure utility.)

Remark:

When you exit the Mifare Card Issuer software, it would automatically store all these keys and parameters you have set. However, these keys might be lost if the computer is broken. So you must well keep all these keys to avoid any problem when the computer is broken.

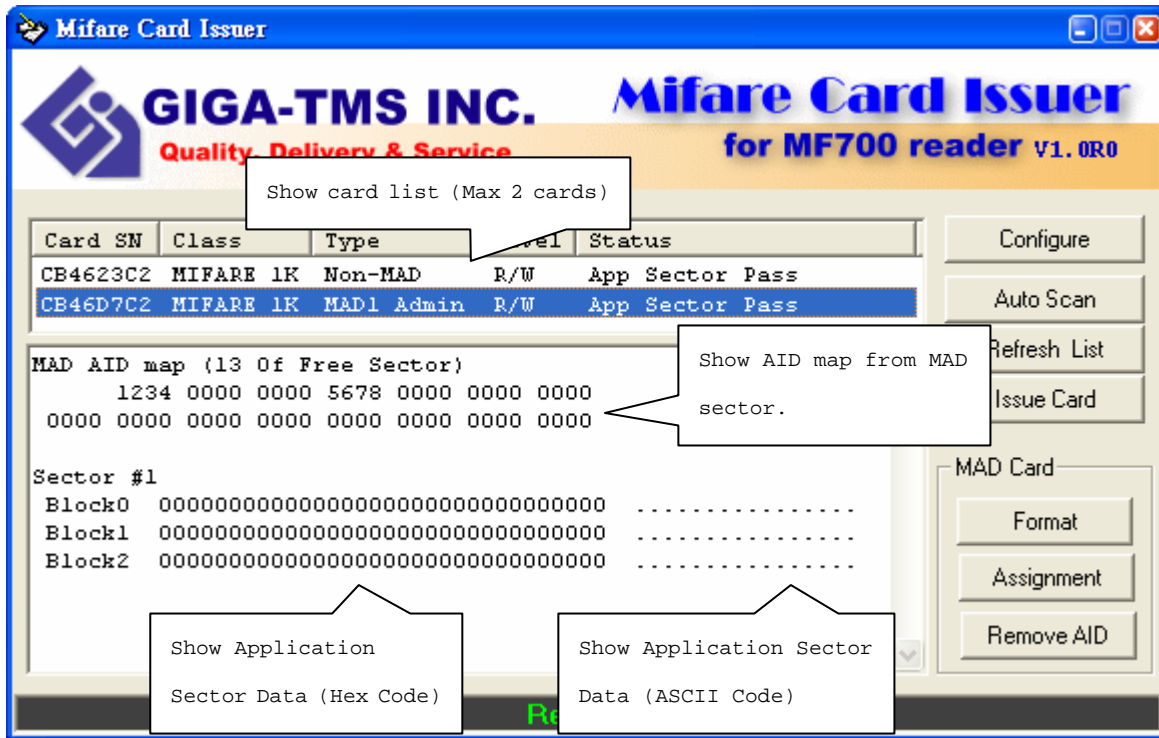
Connect the PCR310U programmer

Prepare for issuing the card, you have to connect the PCR310 programmer to the computer through USB port. If this is your first time to use PCR310 Programmer for your computer, you need to install USB Driver for PCR310. Get the DISK5219 USB driver and put into CD-ROM drive to install it. Just follow the on-screen instructions. After USB driver is installed, click [AutoScan] on Mifare® Card Issuer software, it would find and get PCR310 programmer connection with it.

Issue Data into Non-MAD or MAD card

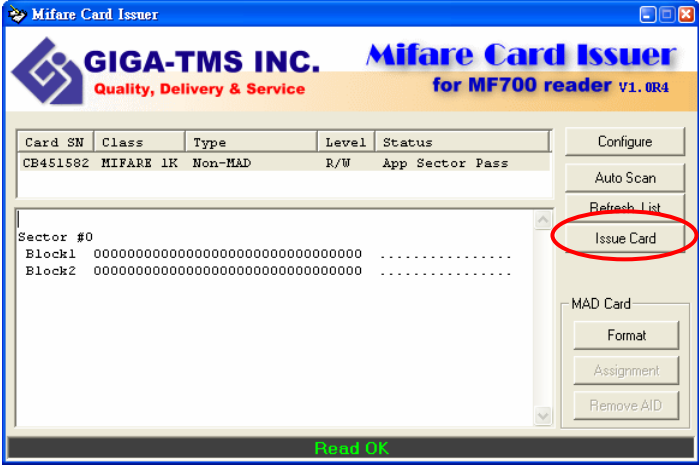
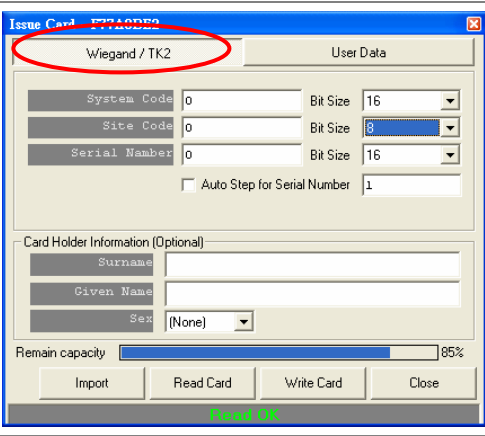
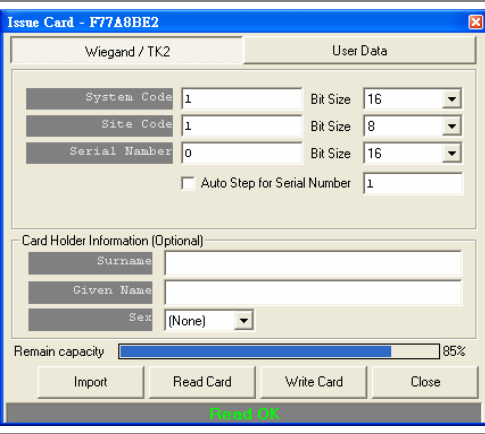
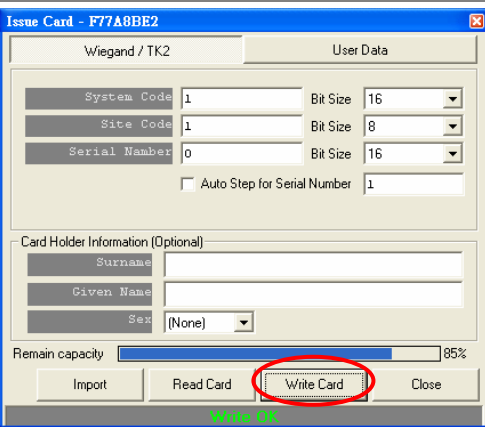
Mifare Card Issuer provides three kinds of data formats to write the card: Wiegand, User-Data and Card Holder Information. The way to write data into MAD card or Non-MAD card is the same. (Refer to ANNEX. A). If you want to issue a MAD card, you must format the card first and then issue the card. (Please first refer to the Paragraph of Create and Manage your MAD card).

Put a new (or two) card (MAD or Non-MAD) into PCR310 programmer, example as below:



1. Card CB4623C2 is a Mifare Standard 1K card, and card type is Non-MAD format, the App Sector is writeable.
2. Card CB46D7C2 is a Mifare Standard 1K card, and card type is MAD format, the App Sector is writeable.

To issue a Wiegand Format card , example as below:

| | |
|--|---|
| <p>Step 1:</p> <p>Select the Card CB4451582 for example (if you put two cards on PCR310 programmer). Click [Issue Card] to write sector data.</p> |  <p>The screenshot shows the 'Mifare Card Issuer' window for MF700 reader V1.0R4. It displays a table with card details: Card SN (CB4451582), Class (MIFARE 1K), Type (Non-MAD), Level (R/W), and Status (App Sector Pass). Below this, sector data for Sector #0 is shown. On the right, the 'Issue Card' button is highlighted with a red circle. Other buttons include 'Configure', 'Auto Scan', 'Refresh List', 'MAD Card' (Format, Assignment, Remove AID), and 'Read OK' at the bottom.</p> |
| <p>Step 2:</p> <p>Select [Wiegand Format]</p> <p>Note:</p> <p>You also can configure your "Bit Size" for "System Code", "Site Code" and "Serial Number" fields.</p> |  <p>The screenshot shows the 'Issue Card - F77A8BE2' dialog box. The 'Wiegand / TK2' tab is selected and circled in red. It contains fields for System Code, Site Code, and Serial Number, each with a 'Bit Size' dropdown menu. There is also an 'Auto Step for Serial Number' checkbox. Below these are fields for Card Holder Information (Surname, Given Name, Sex). A 'Remain capacity' bar shows 85%. At the bottom are 'Import', 'Read Card', 'Write Card', and 'Close' buttons. A 'Read OK' status is at the bottom.</p> |
| <p>Step 3:</p> <p>Input System Code, Site Code and Serial Number in the Wiegand Fields.</p> |  <p>This screenshot is identical to the previous one, but the 'System Code' and 'Site Code' fields now contain the value '1'. The 'Serial Number' field remains '0'. The 'Write Card' button is still not highlighted.</p> |
| <p>Step 4:</p> <p>Click [Write] to write all Wiegand Fields into Card.</p> |  <p>The screenshot is identical to the previous one, but the 'Write Card' button at the bottom is now circled in red. The status at the bottom has changed to 'Write OK'.</p> |

Note:

1. Auto Step: Automatically step the number. If this function is Enabled, it will step the number with the set step value for the sequential number. This function is only for the "Serial Number" field.
2. Wiegand Format as below: (Max 16 bytes for Wiegand Format)

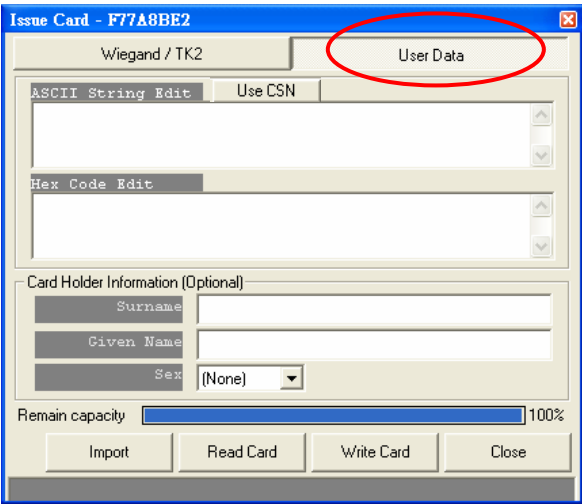
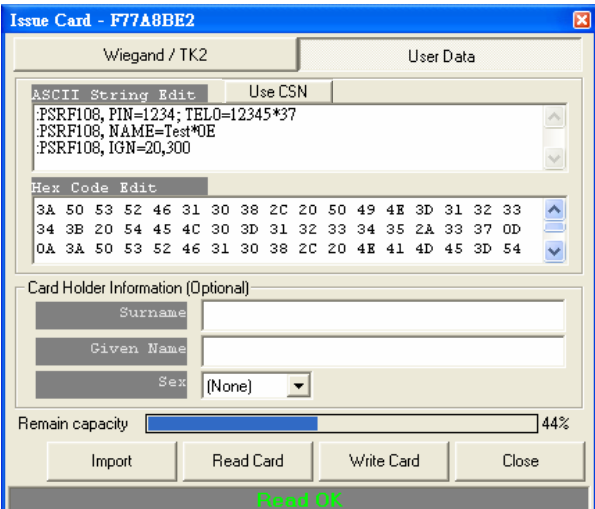
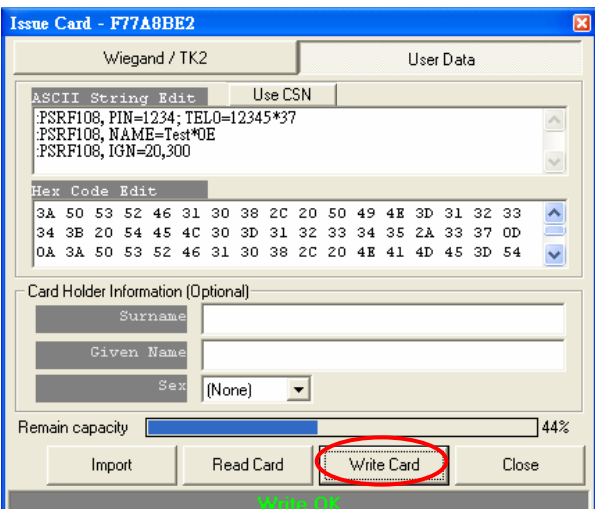
| Fields | Bit Size | Memory Order |
|---------------|----------|--------------|
| System Code | 8~42 | 3 (MSB) |
| Site Code | 8~42 | 2 |
| Serial Number | 8~42 | 1 (LSB) |

Remark: The MF700/LBR700 reader will read number of data size by "Number Of Bits" set.

Example for Wiegand 44bits (Standard Bits Sequence and "Serial Number" bit size=18):

| Parity Bit | System Code | | Site Code | | Serial Number | | Parity Bit |
|------------|-------------|----|-----------|-----|---------------|----|------------|
| Even | b16 | b1 | b8 | b1 | b18 | b1 | Odd |
| b44 (Even) | | | b23 | b22 | (Odd) b1 | | |

To issue a User-Data card , example as below:

| | |
|--|--|
| <p>Step1:</p> <p>Click [Issue Card] and select [User Data] button.</p> |  |
| <p>Step 2:</p> <p>Input Hex Code in "Hex Code Edit" or Input ASCII string in "ASCII String Edit".</p> |  |
| <p>Step 3:</p> <p>Click [Write Card] to write user data into the card.</p> |  |


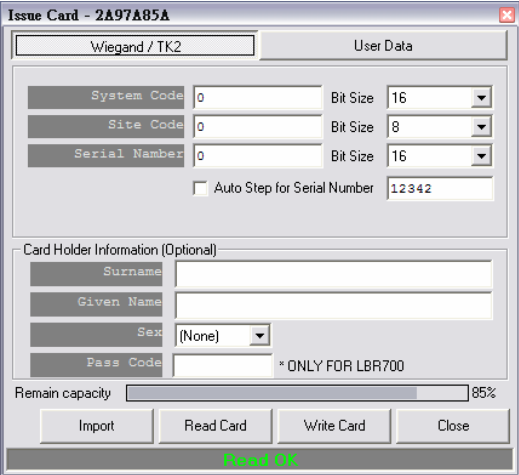
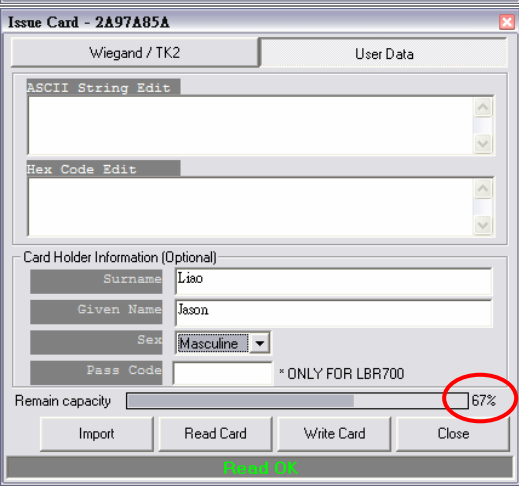
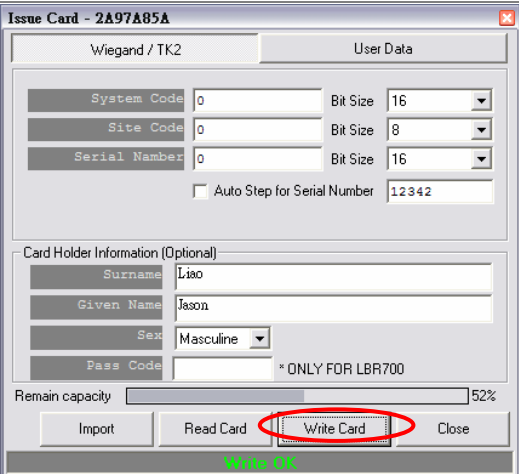
Note:

1. In User Data format, customer can write HEX Code or ASCII String into the card, and the user data can be defined by customer himself.
2. Click "Use CSN" will input the card serial number to ASCII String Edit box.

Remark:

You may set the "Max App Sectors" in "Configure", to get more sectors for data size.

To issue a "Card Holder Information" card , example as below

| | |
|---|--|
| <p>Step 1:</p> <p>Move cursor to "Card Holder Information" fields.</p> |   |
| <p>Step 2:</p> <p>Input Surname, Given Name, Sex and User Data</p> |  |
| <p>Step 3:</p> <p>Click [Write Card] to write user data into the card.</p> |  |

Note:

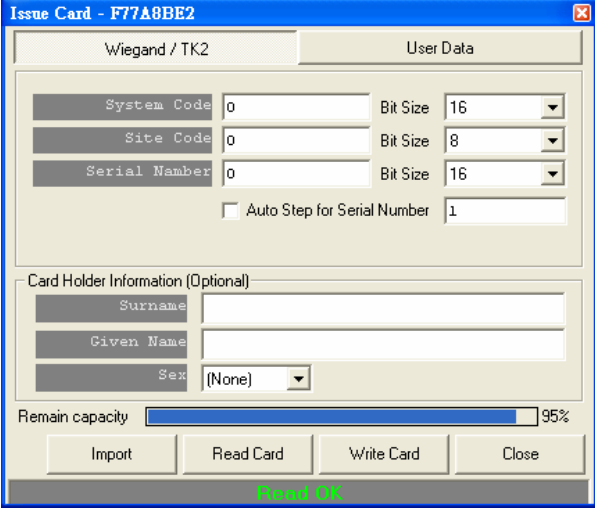
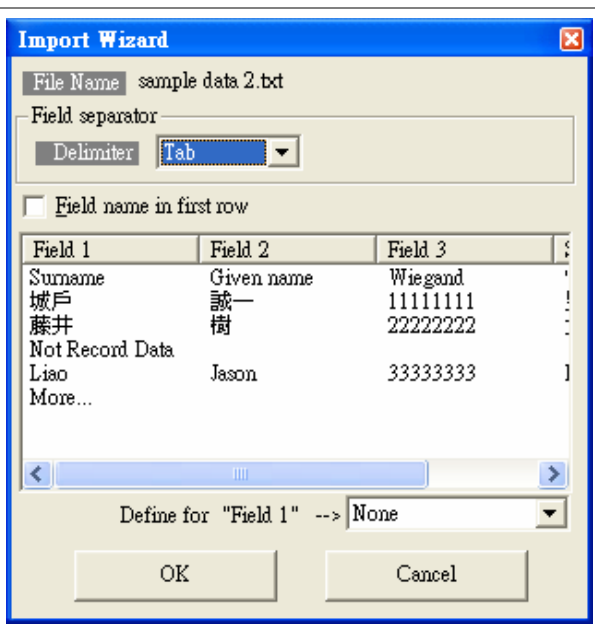
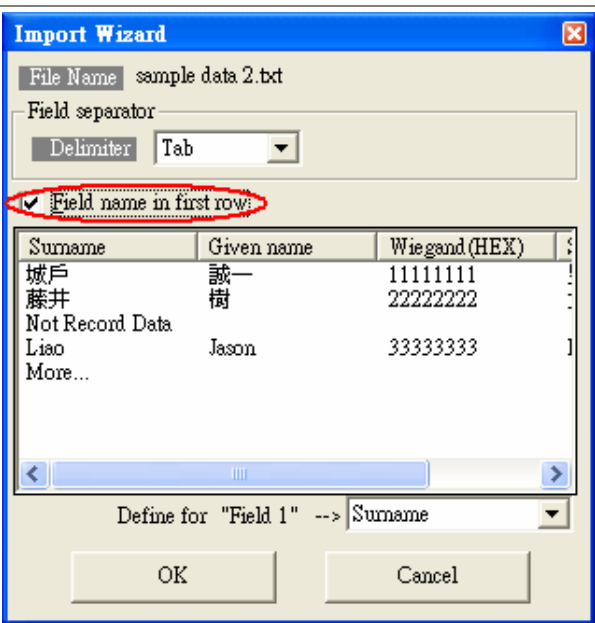
"Card Holder Information" format is defined by MAD, and use ASCII String data for each fields.

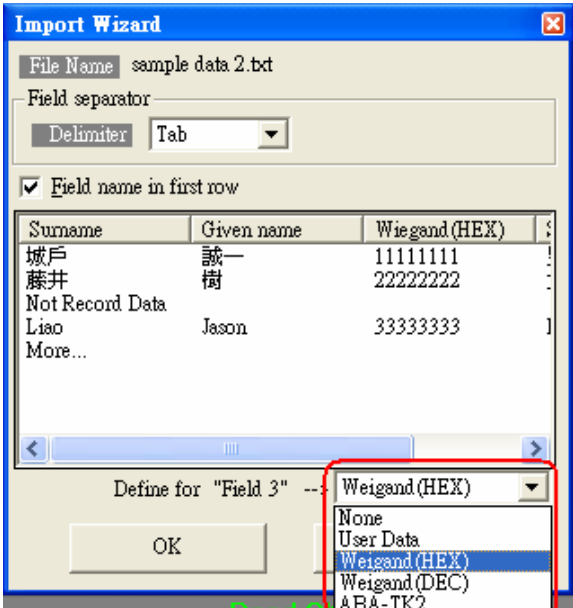
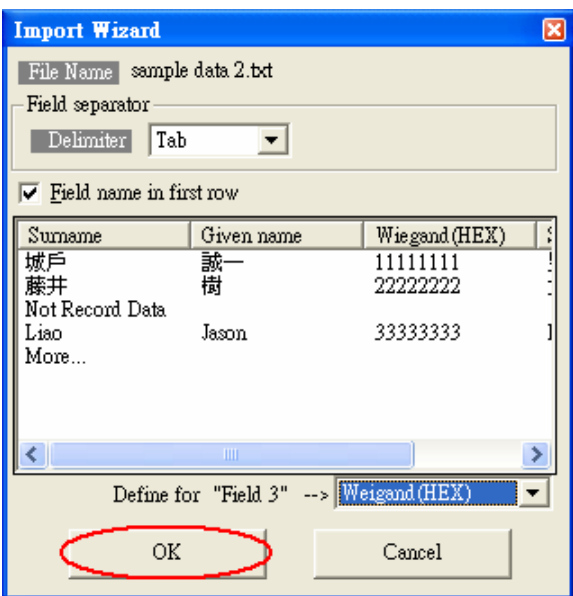
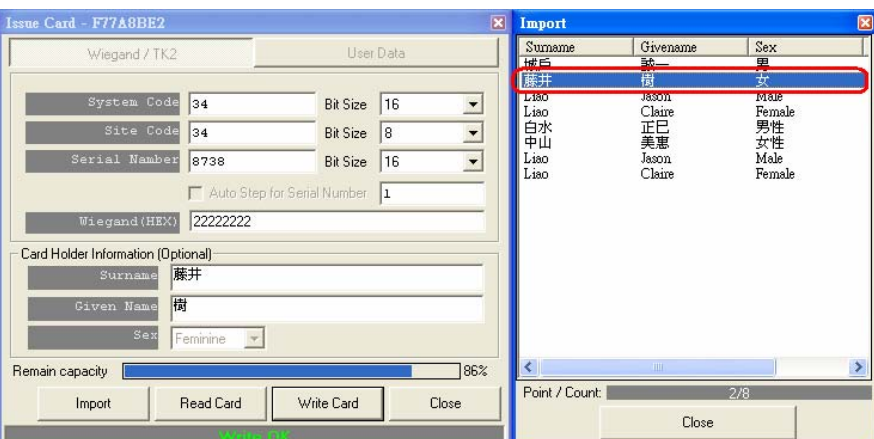
The total data length for all the 4 fields (Surname, Given Name, Sex and User Data) is 46 ASCII characters maximum.

Remark:

1. You may set the "Max App Sectors" in "Configure", to get more sectors for data size.
2. Set up "Pass Code for" LBR700 Reader and max 8 digits.

To Import users from file

| | |
|---|--|
| <p>Step 1:</p> <p>Click "Import"</p> |  |
| <p>Step 2:</p> <p>Select user list file.</p> <p>Example:</p> <p>Select "sample data 2.txt"</p> |  |
| <p>Step 3:</p> <p>Enable "Field name in first row", if first row are field name.</p> |  |

| | |
|---|--|
| <p>Step 4:</p> <p>Redefine field name</p> |  |
| <p>Step 5:</p> <p>Click "OK" when fields define finished.</p> |  |
| <p>Step 6:</p> <p>Select user, and the user will assign to corresponding fields.</p> |  |

Remark:

Support file format: Text , CSV, Excel (Need Microsoft® Excel installed first)

Create and Manage your MAD card

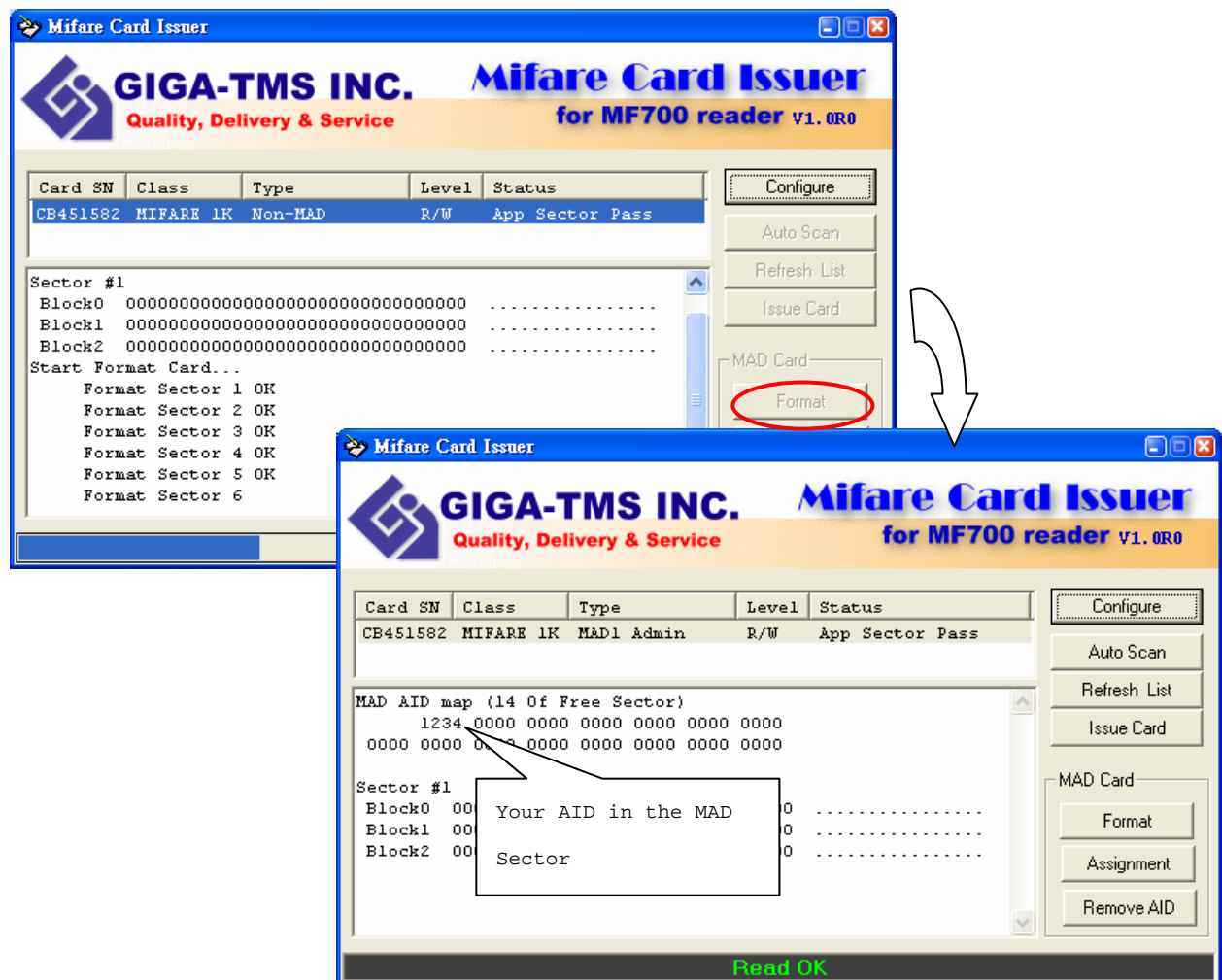
If you are issuing MAD card, you may use "Format", "Assignment" and "Remove AID" to create and manage your MAD card.

1. [Format] to create your MAD cards and include your AID.

You may format all new cards with MAD Format first. After formatted, all the sectors on the card will be protected with MAD Admin KEY (KEY_B). If you have set AID when you configure to set the Mifare Card Issuer parameters, it would write AID into MAD Sector when you format the cards, and it would automatically mate AID to Sector #1 and the Sector #1 would be protected with App Key (KEY_A : Read Only) and App Admin Key (KEY_B: Read/Write).

Note: If Sector#1 has been used with other Application, It would mate AID to Sector#2 or other free sector when the card is formatted.

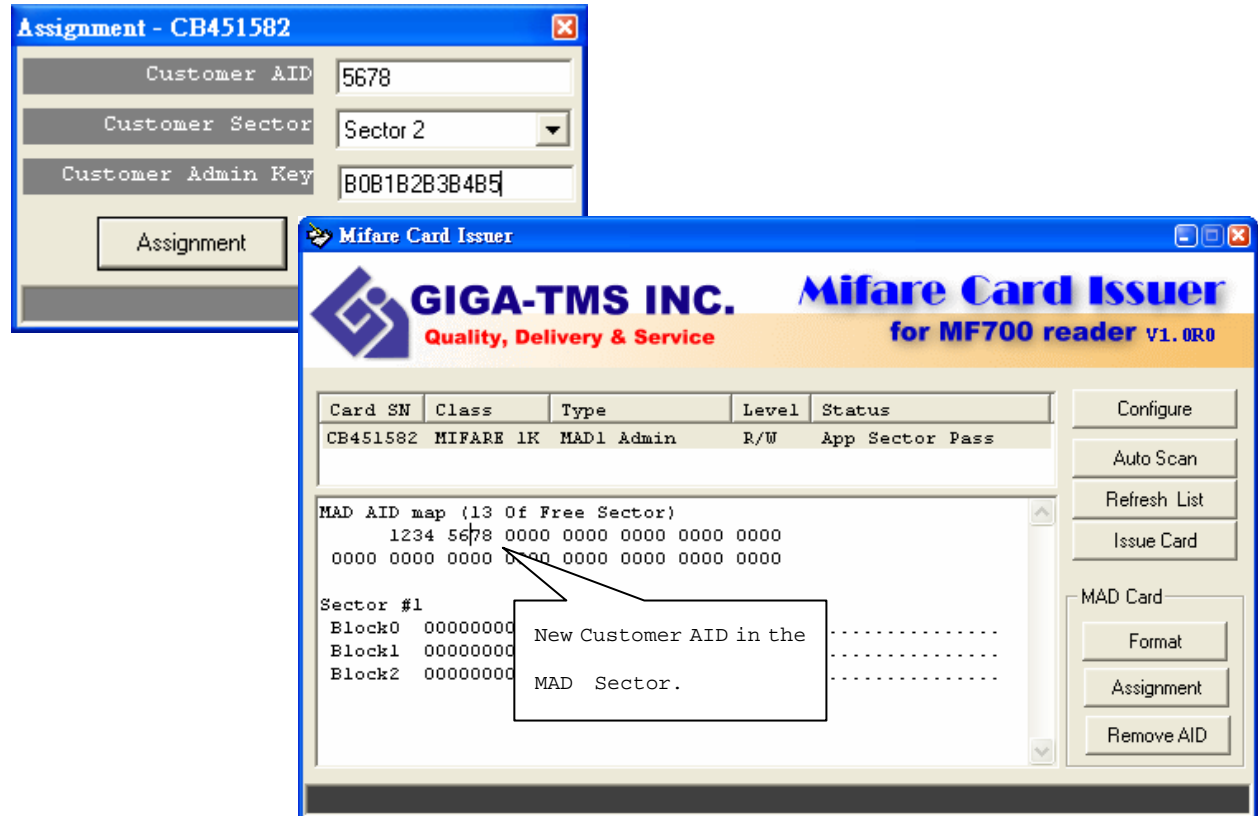
To format a Non-MAD card to a MAD format card , for example as below (AID=1234):



2. [Assignment] your customer AID into your MAD card.

You may also put the Customer AID into your MAD card and you may assign the Customer AID to use the Customer Sector#. And let the Customer Sector# be protected with Customer Admin Key (KEY_B: Read / Write, Default=FFFFFFFFFFFF).

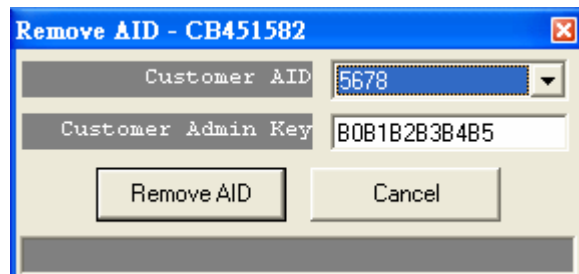
For example, to Assignment the AID=5678 to Sector 2 with KEY=B0B1B2B3B4B5 (KEY_B) protected as below:



3. [Remove AID] from your MAD card..

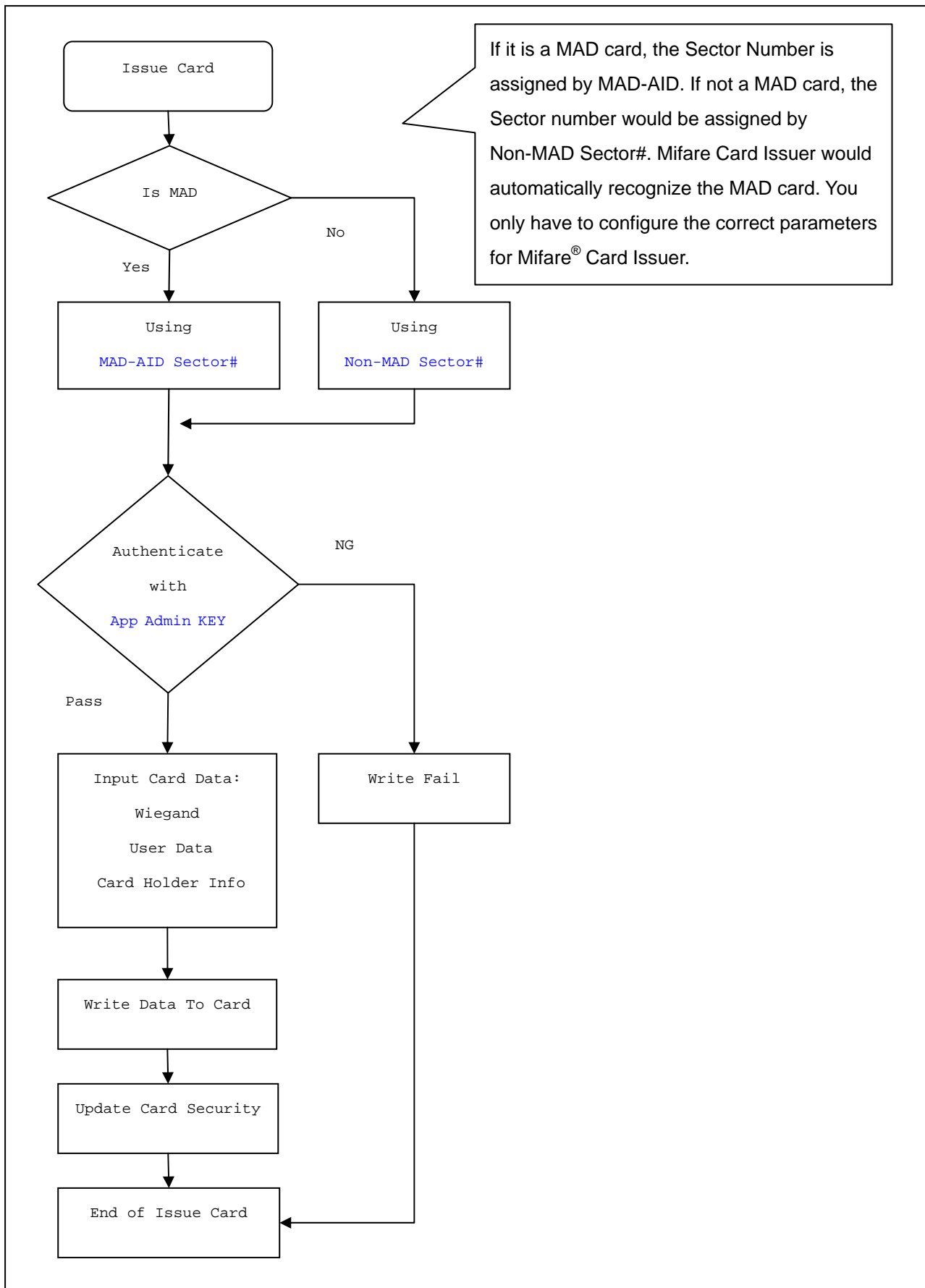
You may also to remove the issued AID from your MAD card. The AID pointer sector will be free and protected with MAD Admin Key after the AID be removed.

For Example, to remove the AID=5687 from your MAD card.



Remark: The customer Admin Key must be set in "Customer Admin Key" field, to free the AID pointer sector.

ANNEX A. Issue Card flow chart



ANNEX B. History

June 15, 2004 REV.A

Initial Mifare® Card Issuer

June 29, 2004 REV.B

Support Multi Sectors (Page 3).

Support Configurable "Bit Size" for each fields of Wiegand format (Page 5,6).

April 25, 2005 REV.C

Add Encrypt mode for fraud prevention. (MF700)

November 30, 2005

Add "Import" function. (Mifare Card Issue V1.1, Page 10)

November 28, 2007

Add "Pass Code" function. (Mifare Card Issue V1.2, Page 9)

May 29, 2008

Add "Use CSN" function. (Mifare Card Issue V1.1R4 Page 8)

PROMAG[®]

GIGA-TMS INC.

<http://www.gigatms.com.tw>

<mailto:promag@gigatms.com.tw>

TEL : +886-2-26954214

FAX : +886-2-26954213

Office: 8F, No. 31, Lane 169, Kang-Ning St., Hsi-Chih, Taipei, Taiwan