

# Guard Tour Utility user manual

Guard Tour Utility user manual .....	1
Revision .....	1
Introduction .....	1
System Requirement .....	2
Install Program.....	2
Launch Program .....	2
Getting Started.....	3
Set Terminal Model and Connected Comport .....	3
Define RFID Tag.....	3
Download Patrol Data.....	4
Print Out Report .....	4
Trayicon menu .....	5
Manage Your Patrol Data .....	5
Terminal Configuration .....	5

## Revision

Completed	Version	Description
2004/11/16	1.0	Original document release Program version: 3.0R1

## Introduction

Guard Tour Utility (GTU) program is used to communicate and utilize the GIGA-TMS's guard tour terminals – GS1000A/GS2000/WM3000A. By GTU, you can download the scanned tag's data, define RFID tag as a location, patrolman or event, and print out the patrol data report.

# System Requirement

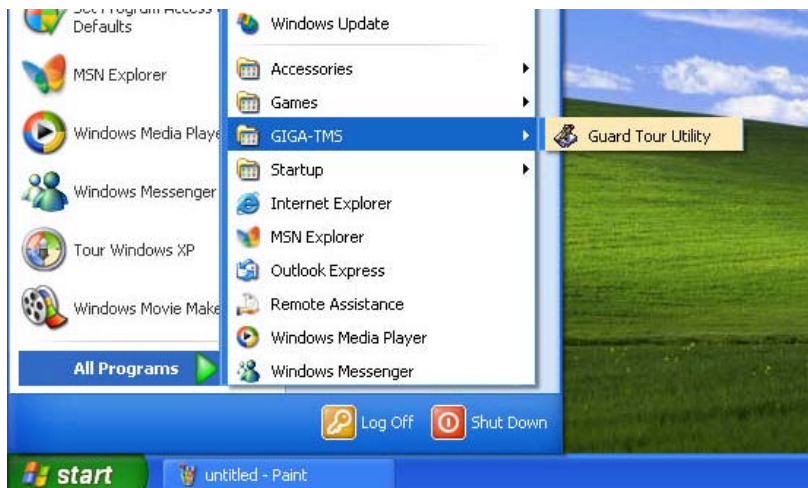
- ◆ Win9x/WinME/WinNT/Win2K/WinXP
- ◆ 30 MB free disk space
- ◆ IE5 or later version installed

# Install Program

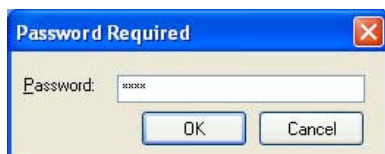
Double-click the setup.exe file that is located in the [gtu] folder of setup CD, and then follow the wizard to complete the installation.

# Launch Program

From **Start / Programs / GIGA-TMS** menu, click **Guard Tour Terminal**.



A [Password Required] window will pop up, enter correct password to login to the program.

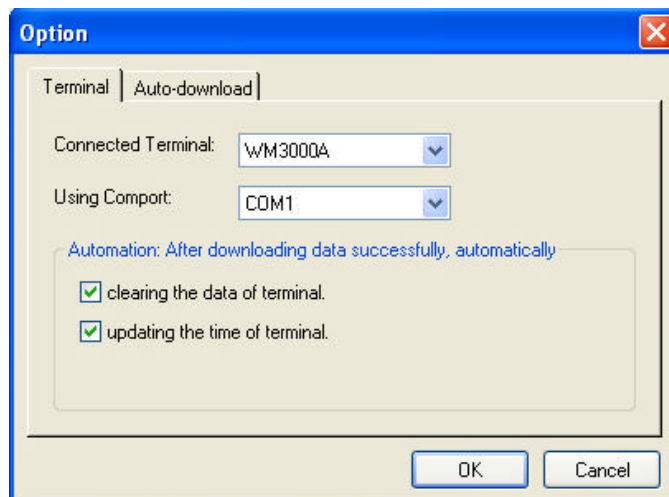


The default password is: 0000

# Getting Started

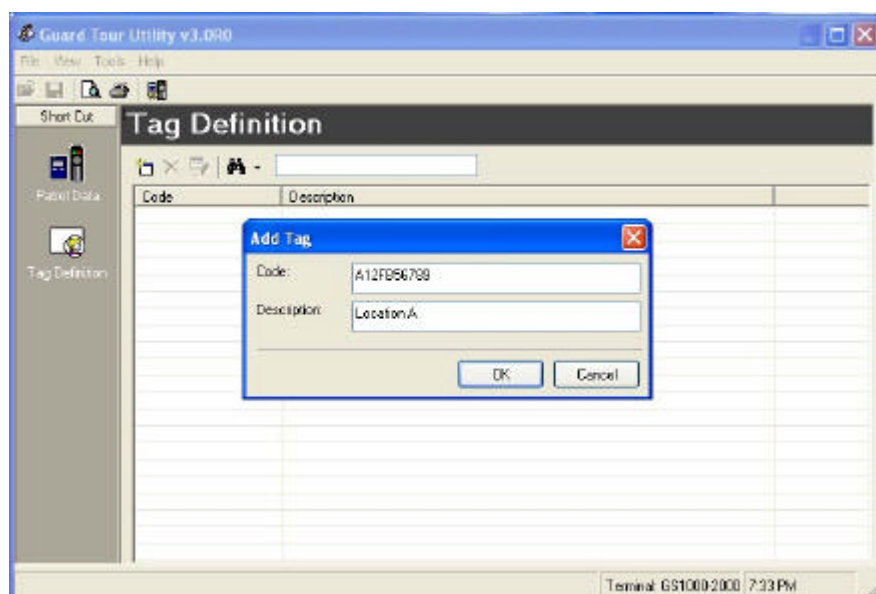
## Set Connected Comport

- ◆ From [Tools] menu, click [Option].
- ◆ On [Terminal] tab, configure the connected comport and terminal.




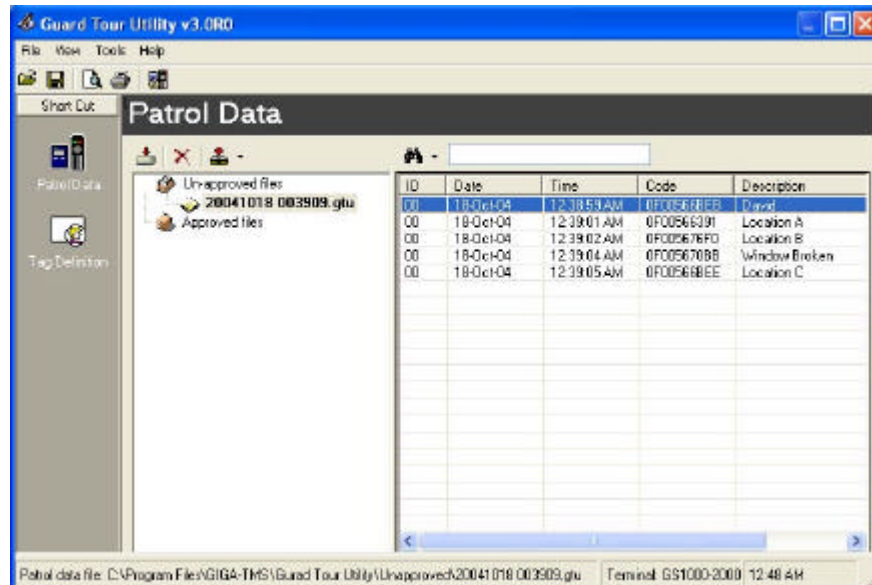
## Define RFID Tag

- ◆ Go into [Tag Definition] Inspection.
- ◆ Click [Add Tag] button to add a new tag.



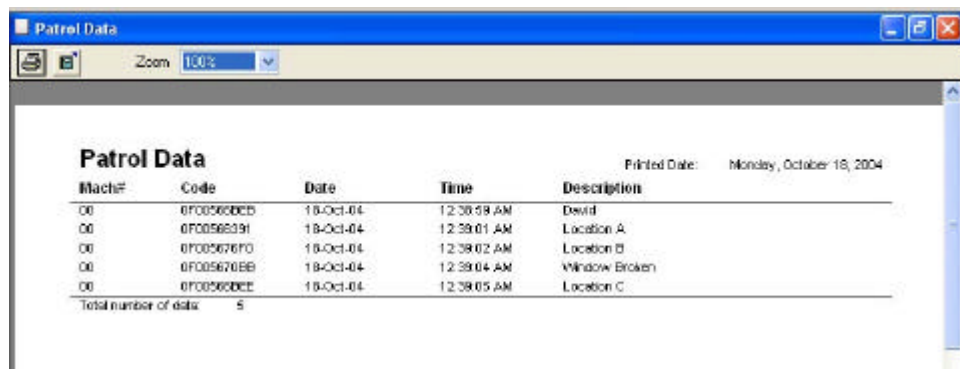
## Download Patrol Data

- ◆ Using guard tour terminal to scan RFID tag.
- ◆ Connect terminal to PC via communication cable.
- ◆ On [Patrol Data] inspection, click .
- ◆ The downloaded data file will be saved to [Unapproved] folder of GTU installed path.



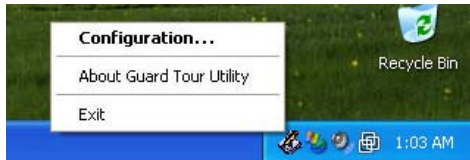
## Print Out Report

- ◆ Go into [Patrol Data] inspection.
- ◆ Select a Patrol Data file.
- ◆ From [File] menu, click [Print]



## Trayicon menu

When GTU is running you can see its icon in the system tray bar (which usually located in the right-bottom corner of screen, near the system clock). Trayicon menu is available by right mouse button click on GTU icon in the system tray.




Trayicon menu contains the items:

- ◆ **Configuration** opens GTU main window.
- ◆ **About Guard Tour Utility** displays general information about GTU.
- ◆ **Exit** End the program.

## Manage Your Patrol Data

When the downloading (from terminal) process is done, GTU will automatically save the downloaded data to a file that is located in the [Unapproved] folder of GTU installed path. The filename is generated by the date / time of downloading the patrol data. For example, if the downloading process takes place at 2004/10/18 15:30:15, then the file name would be [20041018 153015.gtu]. The file is encrypted, only GTU can open the file.

You can review the Patrol Data files in the [Patrol Data] inspection. Once the file has been reviewed or printed out, we recommend to approve it by selecting the file and clicking the approve icon . GTU will move the approved file into to the [Approved] folder of GTU installed path.

## Terminal Configuration

GTU provides a tool that allows you to configure the terminal. Including setting the date / time, clearing patrol data, defining machine number etc.

To enter to [Terminal Configuration] window, from [Tools] menu, click [Terminal Configuration].