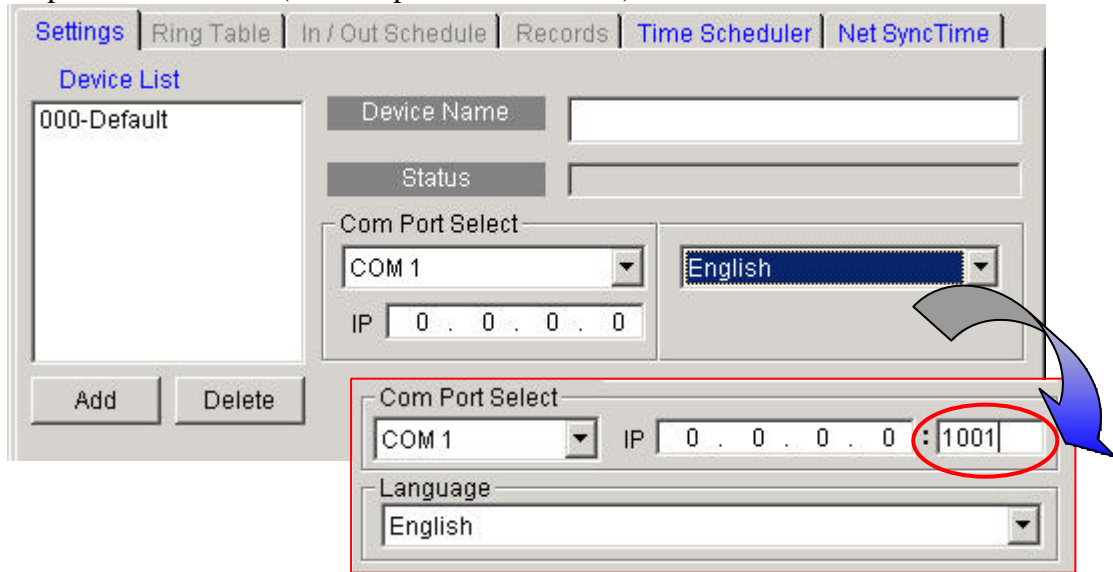


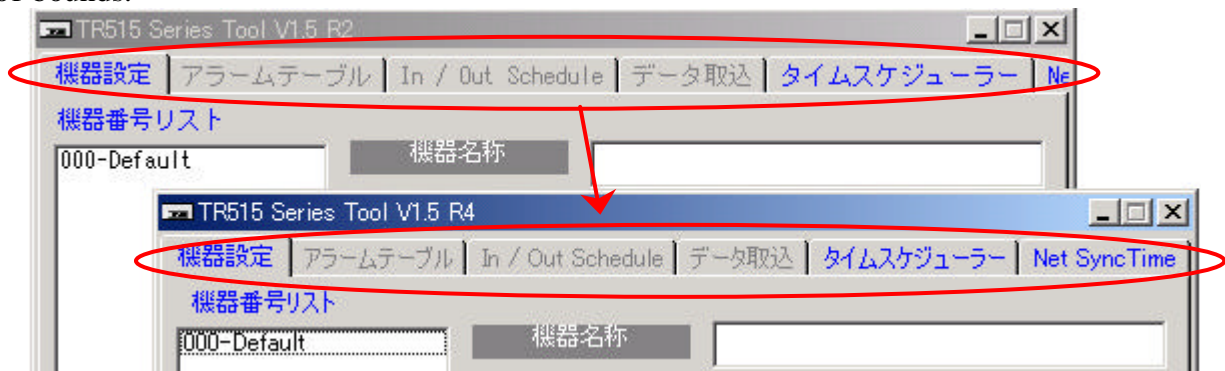
TR515 Revision Notes

2004/12/21 V1.5R4 Add ethernet port number and change the font name of the Japanese language

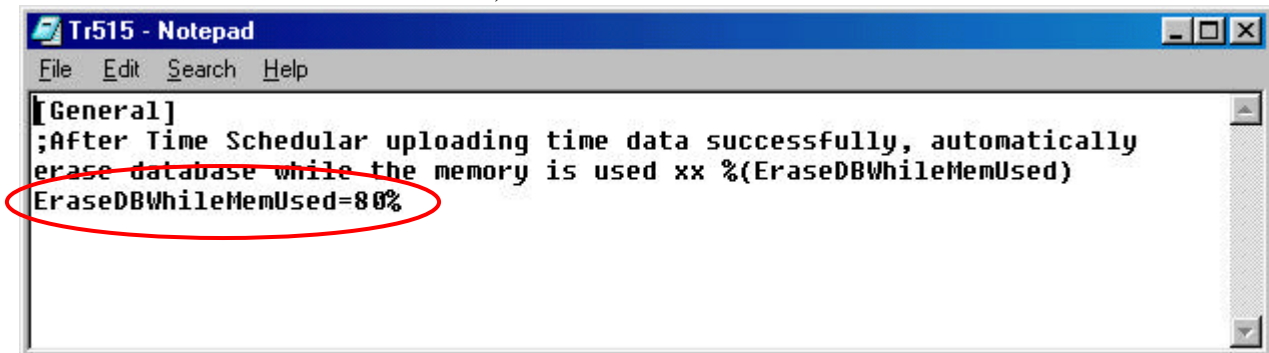
1. Add ethernet port number item (Default port number 1001)



2. Change the font name of the Japanese language to “MS UI Gothic”, which may improve tab string out-of-bounds.



3. Add "EraseDBWhileMemUsed" item in the TR515.ini file, it's tells the "time scheduler" after uploading time data successfully, automatically erase database only while used memory is up to the specified value (Default EraseDBWhileMemUsed=80%)



TR515 Revision Notes

2004/07/28 V1.5R0 Add new record mode and new method to input time

1. Add new record mode - Schedule

The TR515 now provides an event schedule table to set time and event selection for activation at IN or OUT when time is up to the scheduled time, in this mode user directly register an event which was scheduled and read your ID-card; and also user can register an event which was not scheduled by push the appropriate button and read your ID-card, in this case, when finish the card reading TR515 will go back to scheduled event selection (IN or OUT), or waiting for 5 seconds time out the TR515 will also go back to scheduled event selection if user do not read ID-card!

A. Select Schedule Mode

The screenshot shows the 'In / Out Schedule' tab in the settings menu. The 'Record mode' section at the bottom has four radio buttons: 'Manual', 'Always OUT', 'Always IN', and 'Schedule'. The 'Schedule' option is selected and circled in red. Other fields include 'Device Name' (Machine-1), 'Status' (TR51x Firmware Version V1.70), 'Com Port Select' (COM 1), 'Language' (English), and 'IP' (0.0.0.0).

B. Define the In / Out Schedule

The screenshot shows the 'In / Out Schedule' table. The table has columns for 'NO', 'Hour', 'Minute', and 'In / Out'. Row 04 is highlighted with a red box and a red arrow pointing to the 'Check to Enabled' checkbox. Row 05 is highlighted with a red box and a red arrow pointing to the 'Uncheck to disabled' checkbox. The 'Download' button is also highlighted with a red arrow.

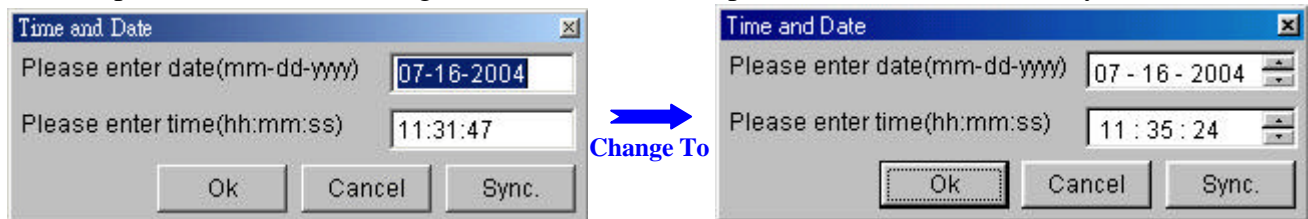
NO	Hour	Minute	In / Out
01	08	00	In
02	12	00	Out
03	13	00	In
04	18	00	Out
05			
06			
07			
08			
09			

Download Settings from PC to machine

TR515 Revision Notes

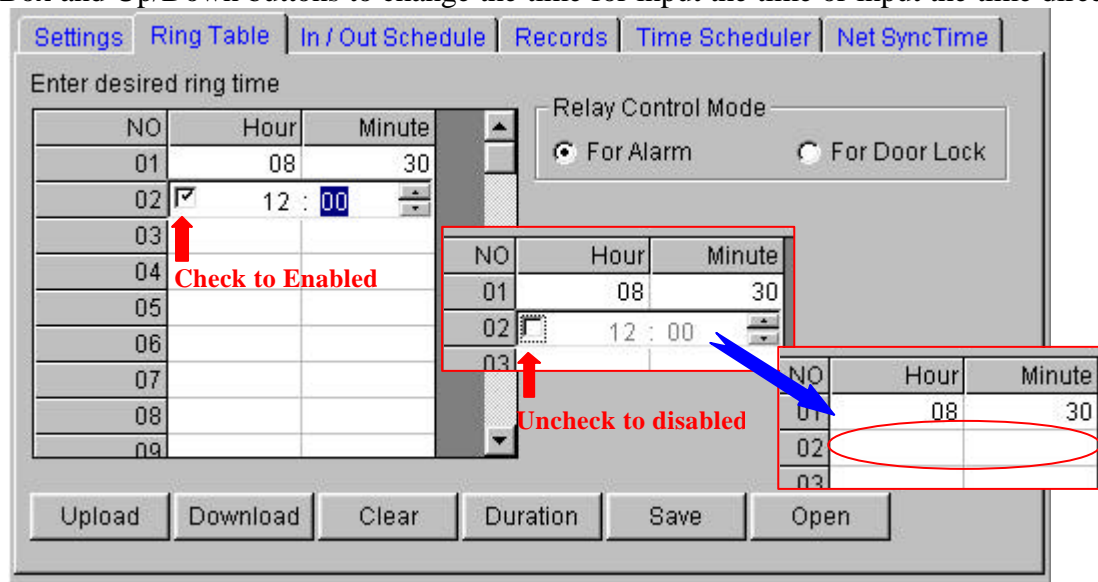
2. *New way to input date and time*

Use the Up/Down buttons to change the date and time or input the date and time directly.



3. *New way to input Right Table*

Use Check Box and Up/Down buttons to change the time for input the time or input the time directly.

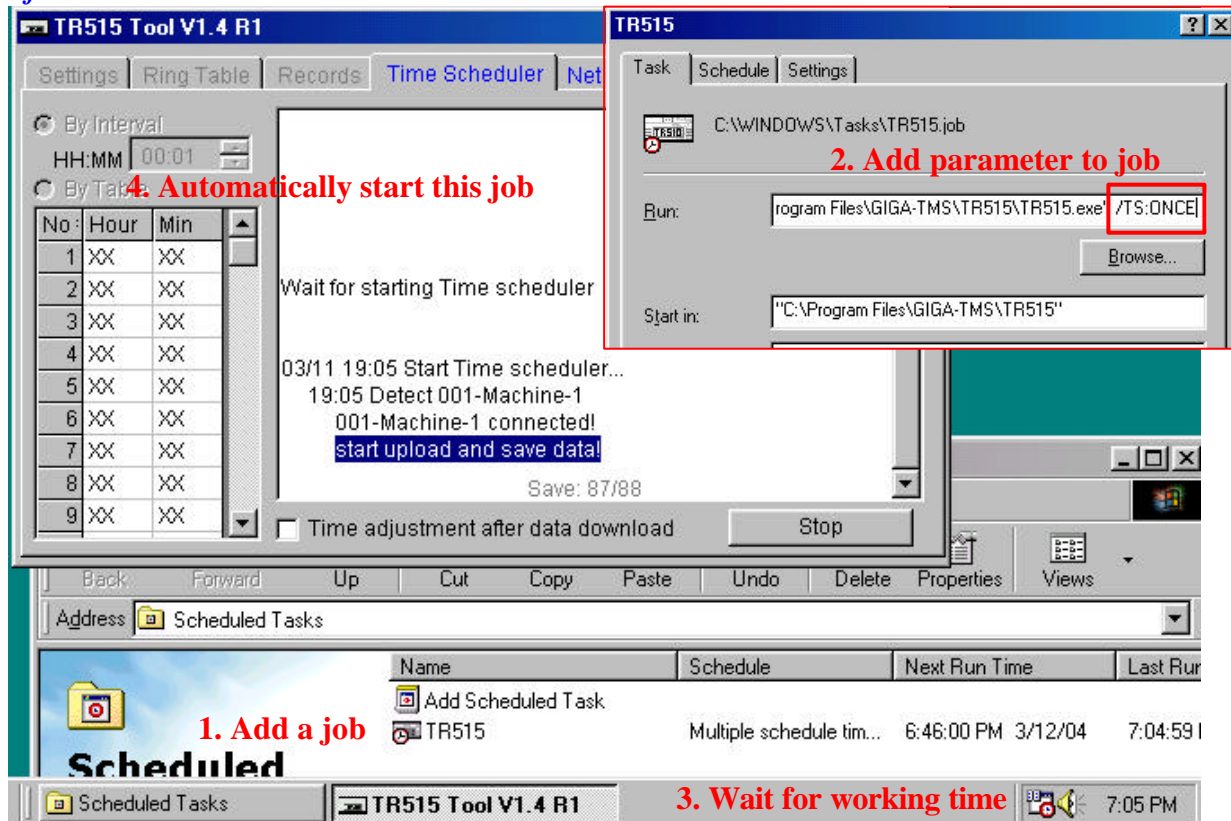


TR515 Revision Notes

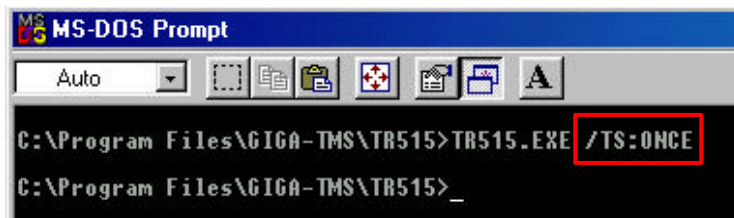
2004/03/12 Auto-Polling without run in the background (Additional)

Use the "/TS:ONCE" parameter, this can make the program automatically execute once "Time Scheduler", upload the data from all machine in no time, and closed the program after finish upload the data.
If you use "/TS:ONCE" with "/S" parameter, this can make the program running in a minimization window.

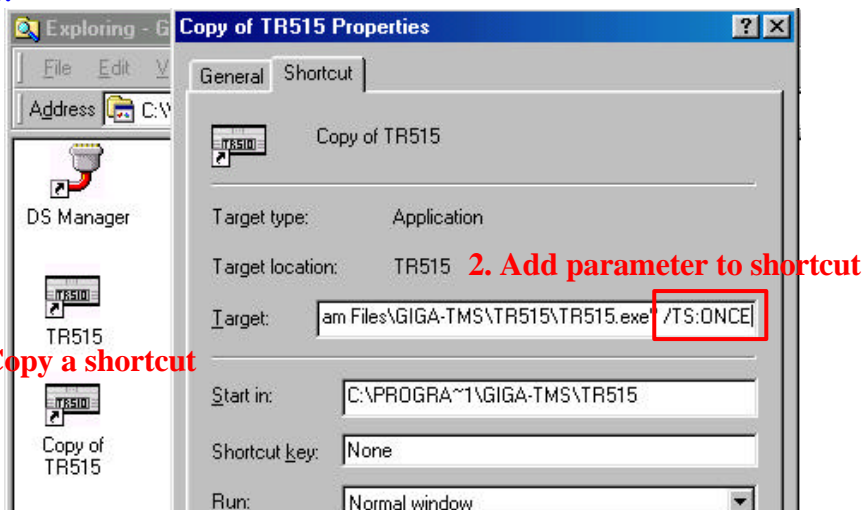
Example of the Scheduled:



Example of the command line:



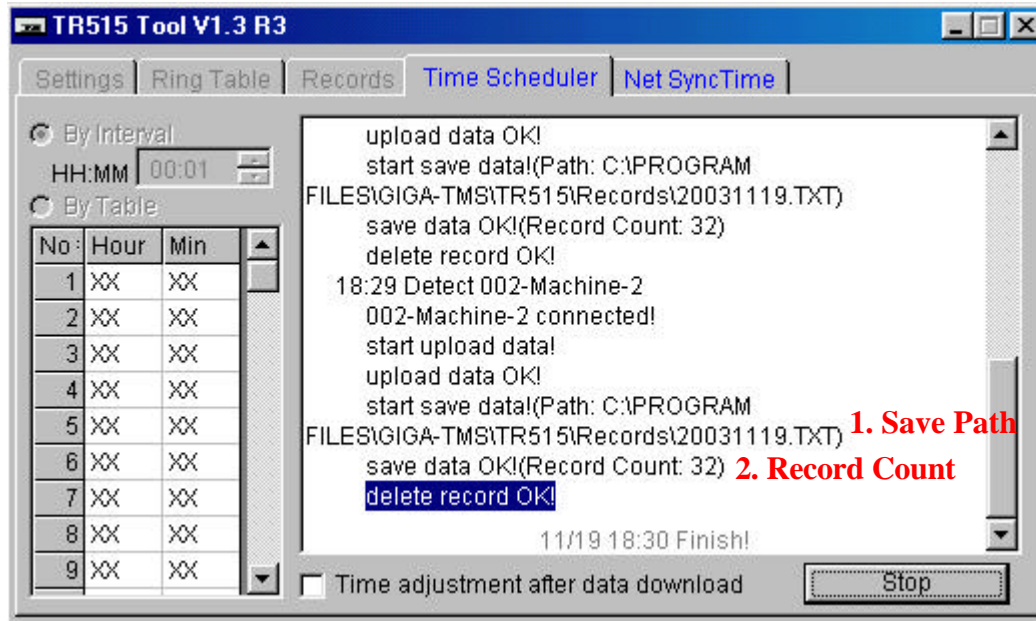
Example of the shortcut:



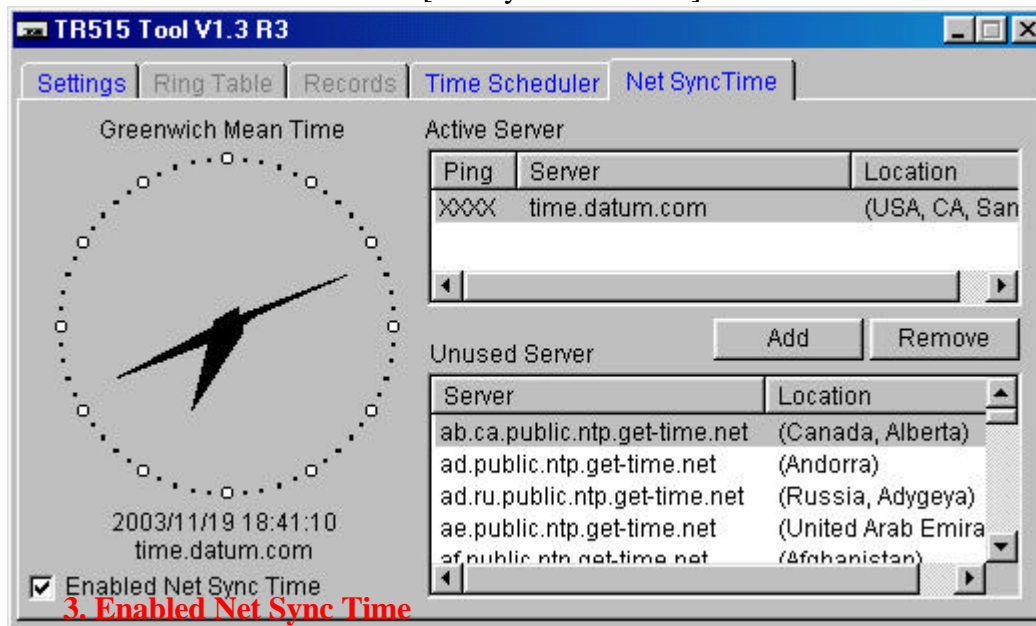
TR515 Revision Notes

2003/11/25 Save Message of The Log And NetSyncTime Optional (Additional)

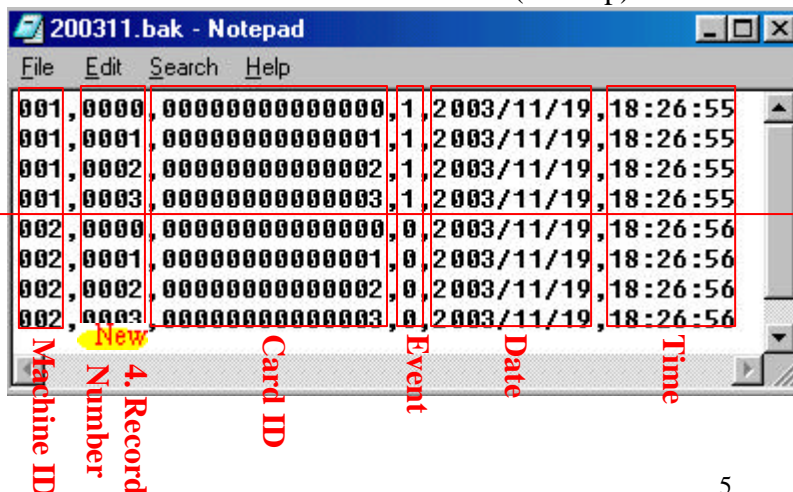
1. The path where the downloaded time data are saved to.
2. The total number of downloaded time data.



3. Select this item to turn on the [Net SyncTime Time] Function.



4. Add record number field to the BAK(Backup) file.



The Backup file, which is located in the [Records] folder of program installed path, is used to debug the abnormal or missing punches. The value of [record number] field increases record by if the value is discontinuance, a missing punch may happen.

Note: If you downloaded more than two time clocks the [Record Number] will be reset to zero for next time clock.

TR515 Revision Notes

2003/10/24 Mifare Card Reader Options (Additional)

Appendix D. Specifications

Display:	4 x 7-segment Blue Light LED
Magnetic card reader:	ISO Track 2, 75 bpi
Barcode reader:	Visible or IR, numerical Code39
New JIS II Magnetic card reader:	JIS II Standard
RFID card reader:	125KHz, ASK, 64bits, Manchester encoding
New Mifare card reader	13.56MHz, ASK , Manchester encoding
RFID reading range, ISO card-sized tag	8 cm
New Mifare reading range, ISO card-sized tag	2~5 cm
Database capacity	App. 8200 records
Supported interfaces	Ethernet / Wireless / RS232 / RS485*
Wireless Communication	315.16/433.92 Mhz or 433.92/434.33Mhz
Communication Distance	Approx 50~100 meters(in visible site)
Communications parameters	19200-8-n-1
Bell control relay	1A, 12V max
Physical dimensions	185(L) x 110(W) x 51(H) mm
Installation	Wall-mount or desktop
Power supply	DC 9V, 500mA
Operating temperature range	0-55 C°
Operating humidity	5-95%

* Requires a special adaptor (CON485, purchased separately)

Appendix E. Ordering Information

Ethernet Interface

TR515EM	Time Recorder with Magnetic Card Reader
TR515ER	Time Recorder with RFID Card Reader
TR515EB	Time Recorder with Barcode Card Reader (visible)
TR515EF	Time Recorder with Barcode Card Reader (infrared)
New TR515EJ	Time Recorder with JIS II Magnetic Card Reader
New TR515ER-MF	Time Recorder with Mifare Card Reader

Wireless Interface

TR515WM	Time Recorder with Magnetic Card Reader
TR515WR	Time Recorder with RFID Card Reader
TR515WB	Time Recorder with Barcode Card Reader (visible)
TR515WF	Time Recorder with Barcode Card Reader (infrared)
New TR515WR-MF	Time Recorder with Mifare Card Reader

RS-232/485 Interface

TR515SM	Time Recorder with Magnetic Card Reader
TR515SR	Time Recorder with RFID Card Reader
TR515SB	Time Recorder with Barcode Card Reader (visible)
TR515SF	Time Recorder with Barcode Card Reader (infrared)
New TR515SR-MF	Time Recorder with Mifare Card Reader

TR515 Revision Notes

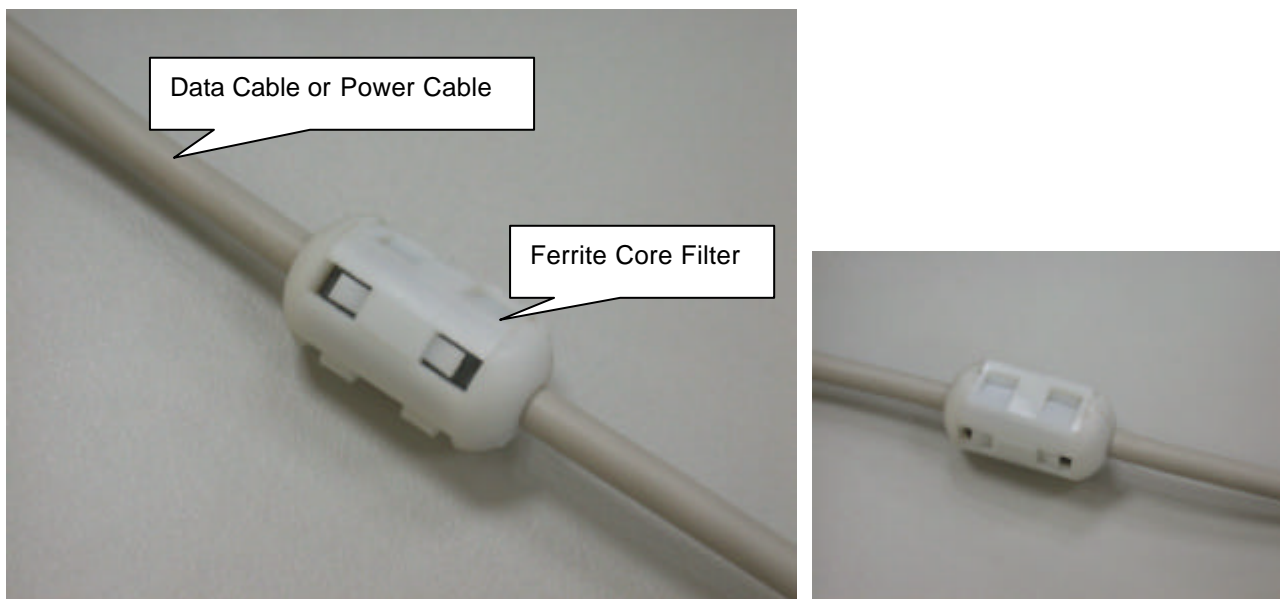
2003/6/25

NOISE FILTER

To reduce the interference generated by other electronic devices and ensure your terminal in good working order, we strongly recommend you to add a **NOISE FILTER** to the data cable as well as the power cable.

This is a common protective measure for the computer equipment installed in the vicinity of high-power electric devices. In some cases, the terminals are installed in locations where the power supply is often unsteady or several electronic devices are in close distance. To keep the terminals in normal operation, it is necessary to add a **ferrite core filter** to the power cable to avoid the glitch caused by sudden electric current impulse. The noise filter helps to suppress the noise strikes through the cables and minimize the influence of possible instantaneous current pulsation.

Use a hinged-clamp ferrite core filter as shown in the photos below to enhance the adaptability of your terminals to instable power. The core should be placed as close as possible to the terminal side of the cable.

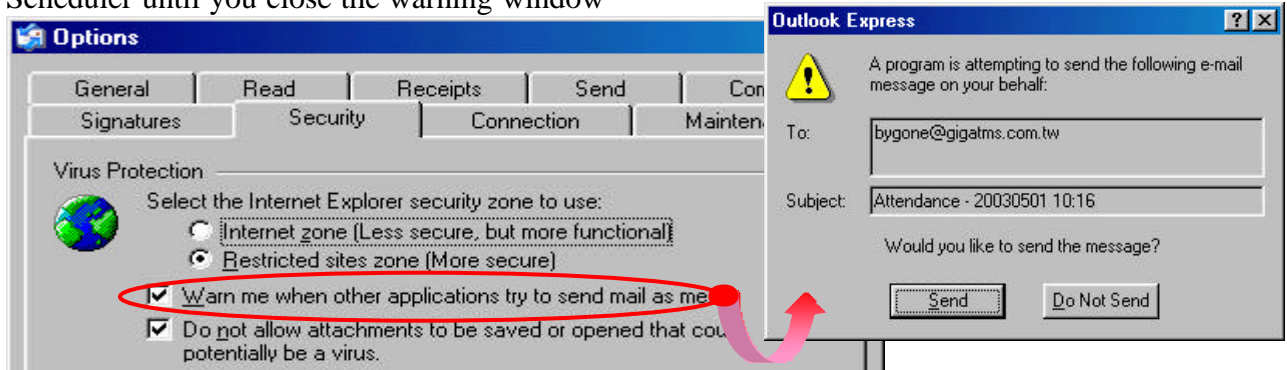


TR515 Revision Notes

2003/5/1 1.3R0 Time Scheduler Save File Options (Additional)

1. By Interval(Additional)
Execute the Time Scheduler function by the interval
2. Save File Options(Additional)
 - A. Mail the File

If you use the Outlook Express 6+, you have to disable the check box “Warn me when other applications try to send mail as me”, when you don’t want the warning window to suspend Time Scheduler until you close the warning window



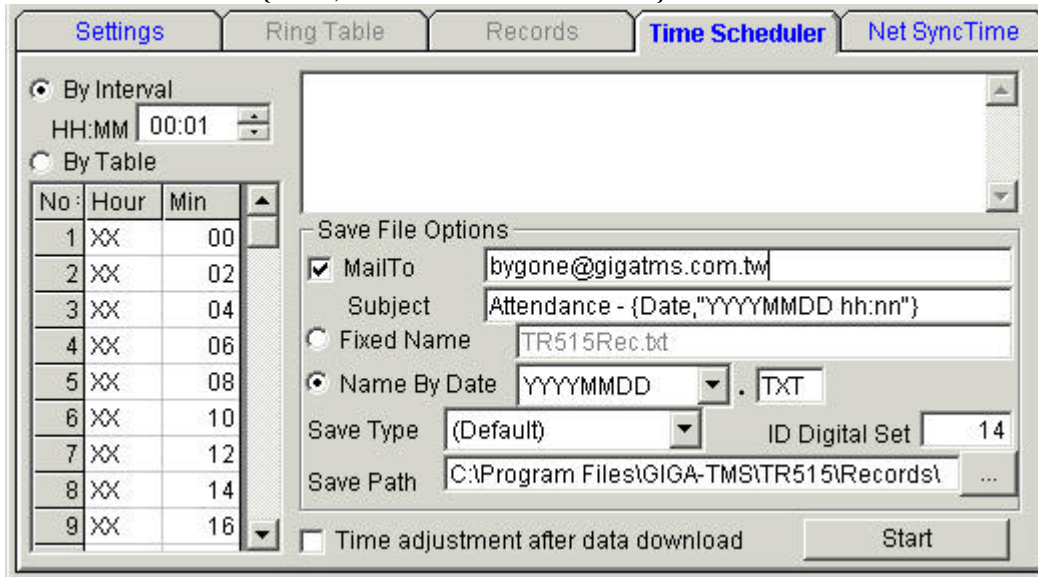
- (1). Mail To: E-Mail Address
- (2). Subject: You can add a date to subject in “{Date}” or “{Date[,“format parameter”]}”.

Parameter	Description	Parameter	Description
Y	Year	H	Hour
M	Month	N	Minute
D	Day	S	Second

Example:

“Attendance – {Date}” = “Attendance – 2003/4/25”

“Attendance – {Date, “YYYYMMDD hh:nn”}” = “Attendance - 20030425 17:48”



TR515 Revision Notes

B. Select the file name and file type

This option is work on “Time Scheduler” and “Records”

(1). Select File Name

- a. Fixed Name
- b. Name by Date

(2). Select File Type

Use “ID Digital Set” to set the User ID length only with the (Default) option.

Settings Ring Table Records **Time Scheduler** Net SyncTime

☒ By Interval
HH:MM 00:01

☐ By Table

No.	Hour	Min
1	XX	00
2	XX	02
3	XX	04
4	XX	06
5	XX	08
6	XX	10
7	XX	12
8	XX	14
9	XX	16

Save File Options

☒ MailTo bygone@gigatms.com.tw
Subject Attendance - {Date, "YYYYMMDD hh:nn"}

☐ Fixed Name TR515Rec.txt

☒ Name By Date YYYYMMDD

Save Type (Default) ID Digital Set 14

Save Path (Default) TMS\TR515\Records\

☐ Time adjustment after data download

Start

Settings Ring Table **Records** Time Scheduler Net SyncTime

NO#	Card No	Event	Date	Time
-----	---------	-------	------	------

00000 / 00000

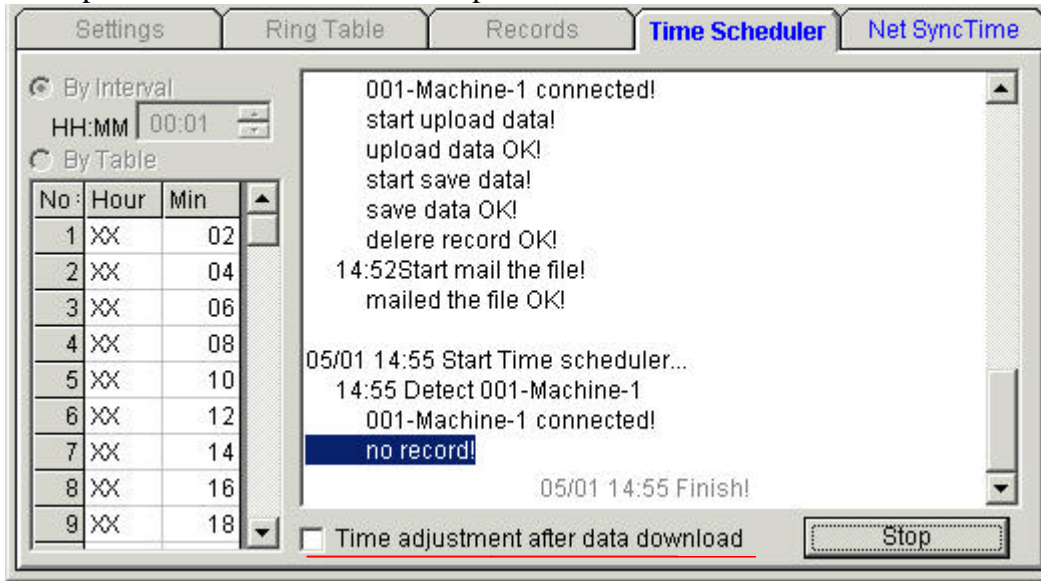
Save Type (Default) ID Digital Set 14

Upload Database Save Open

TR515 Revision Notes

3. Time Scheduler - Time adjustment after data download (Additional)

If “Time adjustment after data download” is selected, it’s will auto-adjust the time of each machine according to the preset network time after the operation is done.



4. Net SyncTime (Additional)

“Net SyncTime” will derive DATE/TIME from network time server. If your PC does not connect with any network, “Net SyncTime” will derive DATE/TIME from local PC.

A. Server information from the file “TimeServer.ini”

B. Active Server

- (1). Maximum number of Active Server allowed is 5
- (2). Auto scan “Active Server” list to connect with a better server.
- (3). Get Greenwich Mean Time from the better server
- (4). Use “Remove” button to move Active Server to Unused Server

C. Unused Server

You can use “Add” button to add Unused Server to Active Server

