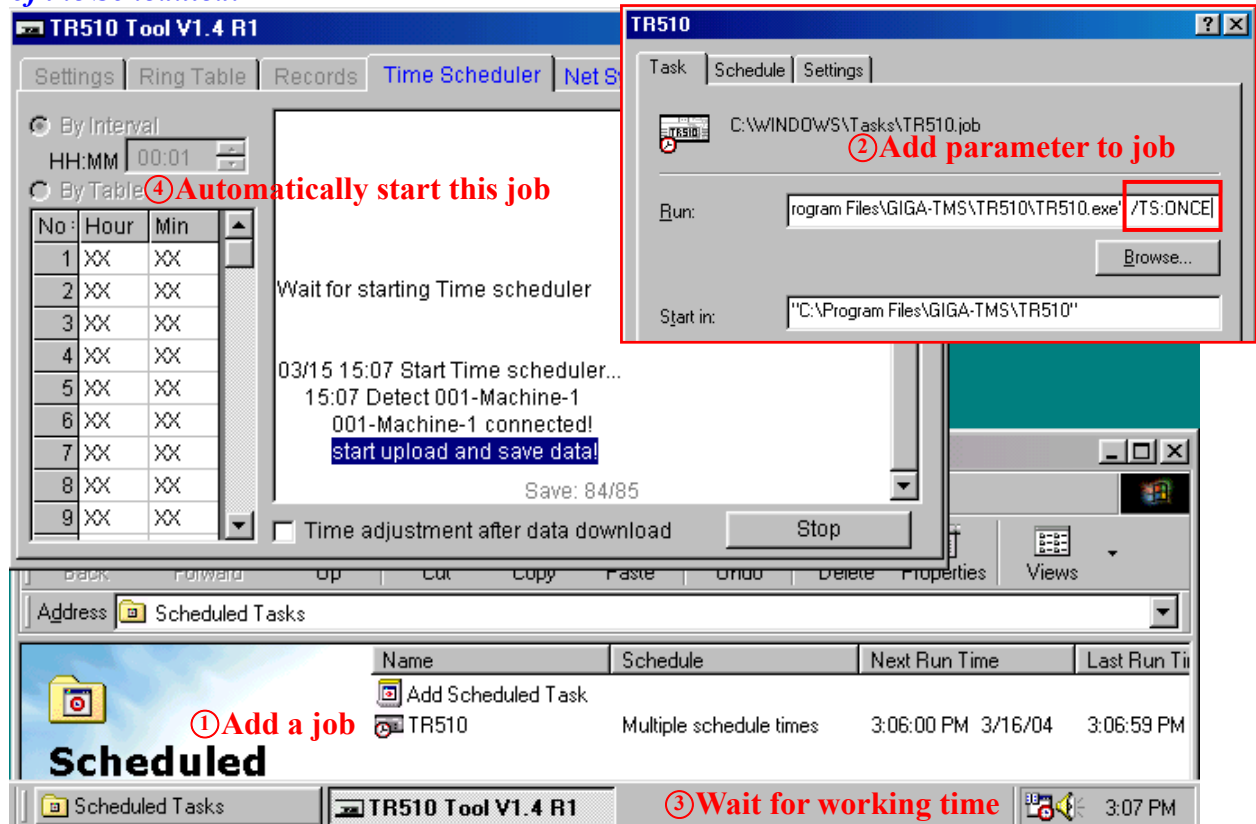


TR510 Revision Notes

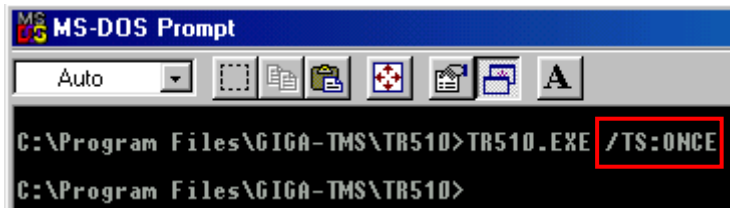
2004/03/12 Auto-Polling without run in the background (Additional)

Use the "/TS:ONCE" parameter, this can make the program automatically execute once "Time Scheduler", upload the data from all machine in no time, and closed the program after finish upload the data.
If you use "/TS:ONCE" with "/S" parameter, this can make the program running in a minimization window.

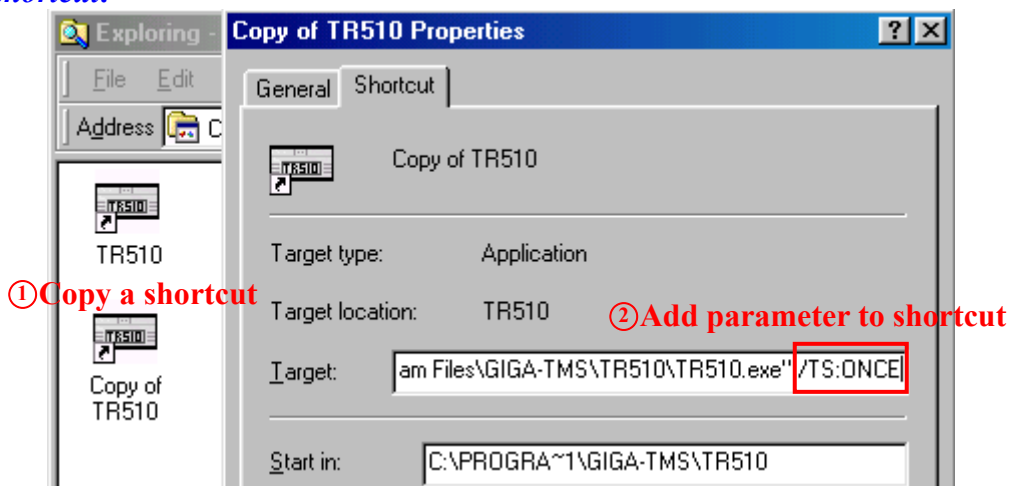
Example of the Scheduled:



Example of the command line:



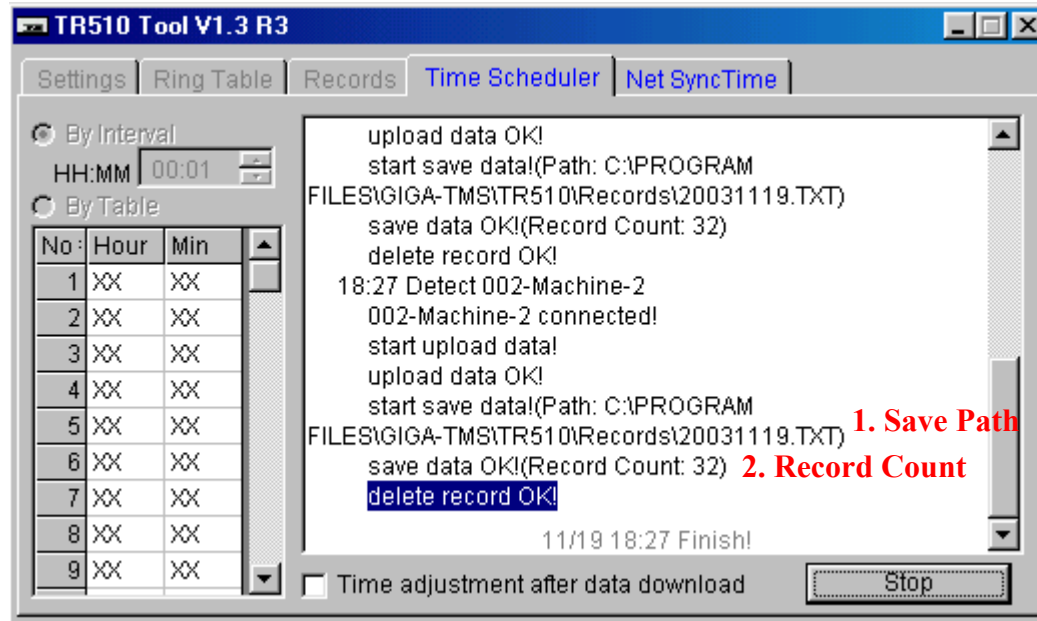
Example of the shortcut:



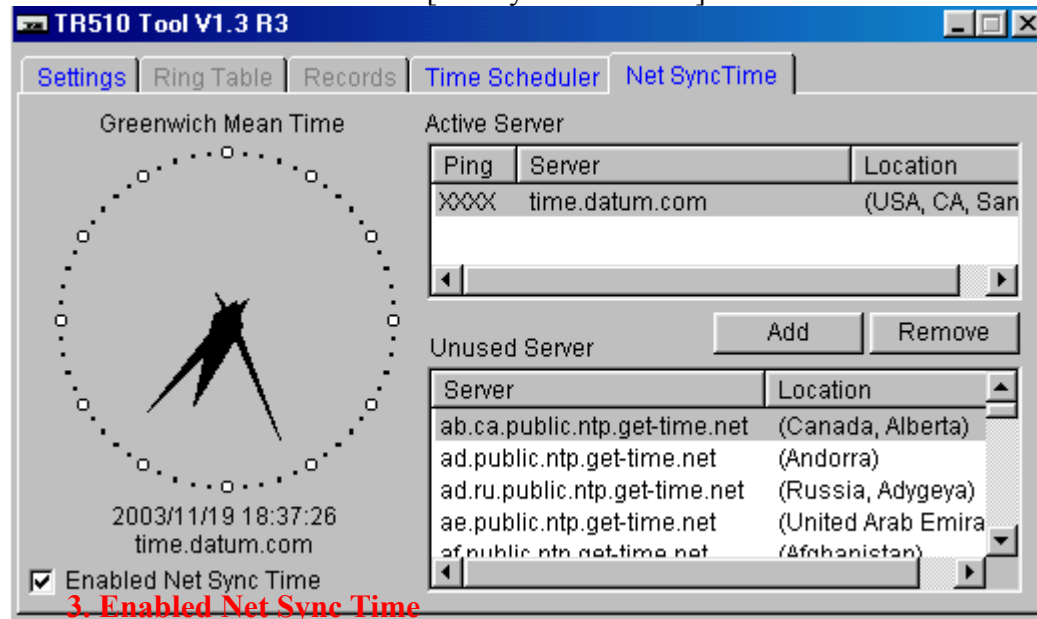
TR510 Revision Notes

2003/11/25 Save Message of The Log And NetSyncTime Optional (Additional)

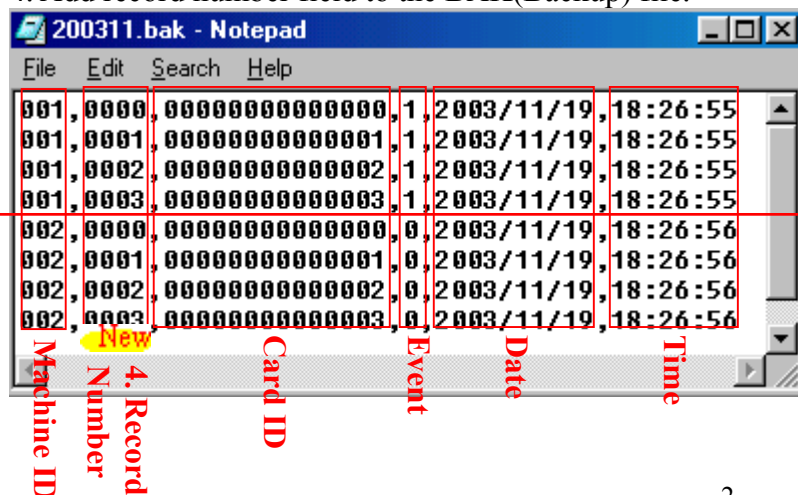
1. The path where the downloaded time data are saved to.
2. The total number of downloaded time data.



3. Select this item to turn on the [Net SyncTime Time] Function.



4. Add record number field to the BAK(Backup) file.



The Backup file, which is located in the [Records] folder of program installed path, is used to debug the abnormal or missing punches. The value of [record number] field increases record by if the value is discontinuance, a missing punch may happen.

Note: If you downloaded more than two time clocks the [Record Number] will be reset to zero for next time clock.

TR510 Revision Notes

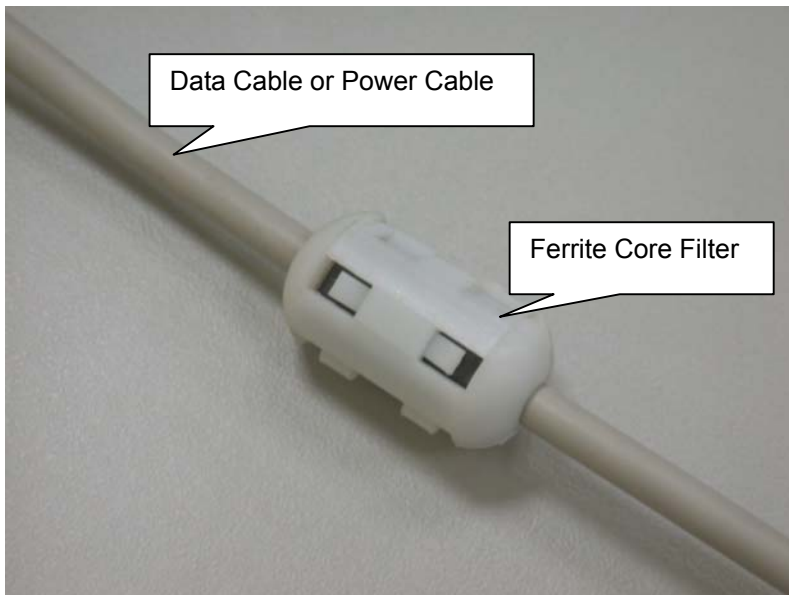
2003/6/25

NOISE FILTER

To reduce the interference generated by other electronic devices and ensure your terminal in good working order, we strongly recommend you to add a **NOISE FILTER** to the data cable as well as the power cable.

This is a common protective measure for the computer equipment installed in the vicinity of high-power electric devices. In some cases, the terminals are installed in locations where the power supply is often unsteady or several electronic devices are in close distance. To keep the terminals in normal operation, it is necessary to add a **ferrite core filter** to the power cable to avoid the glitch caused by sudden electric current impulse. The noise filter helps to suppress the noise strikes through the cables and minimize the influence of possible instantaneous current pulsation.

Use a hinged-clamp ferrite core filter as shown in the photos below to enhance the adaptability of your terminals to instable power. The core should be placed as close as possible to the terminal side of the cable.

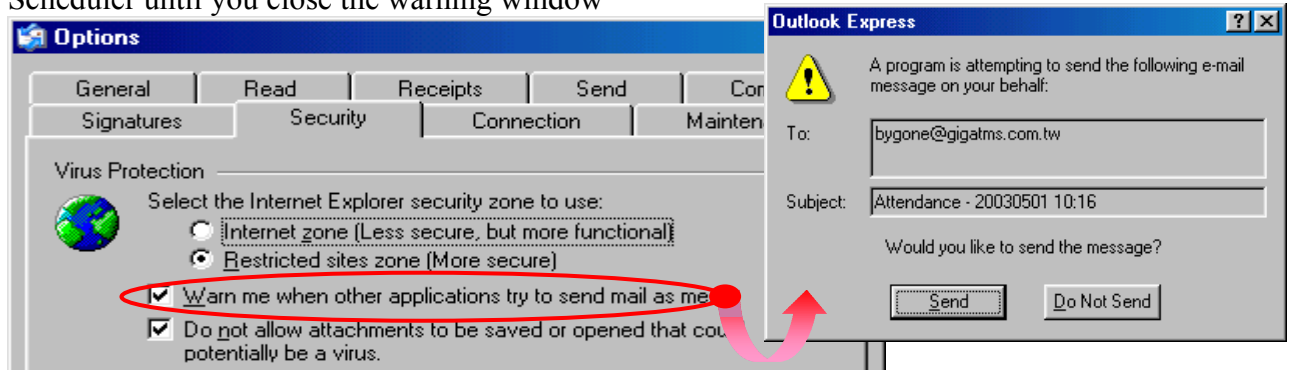


TR510 Revision Notes

2003/5/1 1.3R0 Time Scheduler Save File Options (Additional)

1. By Interval(Additional)
Execute the Time Scheduler function by the interval
2. Save File Options(Additional)
 - A. Mail the File

If you use the Outlook Express 6+, you have to disable the check box “Warn me when other applications try to send mail as me”, when you don’t want the warning window to suspend Time Scheduler until you close the warning window



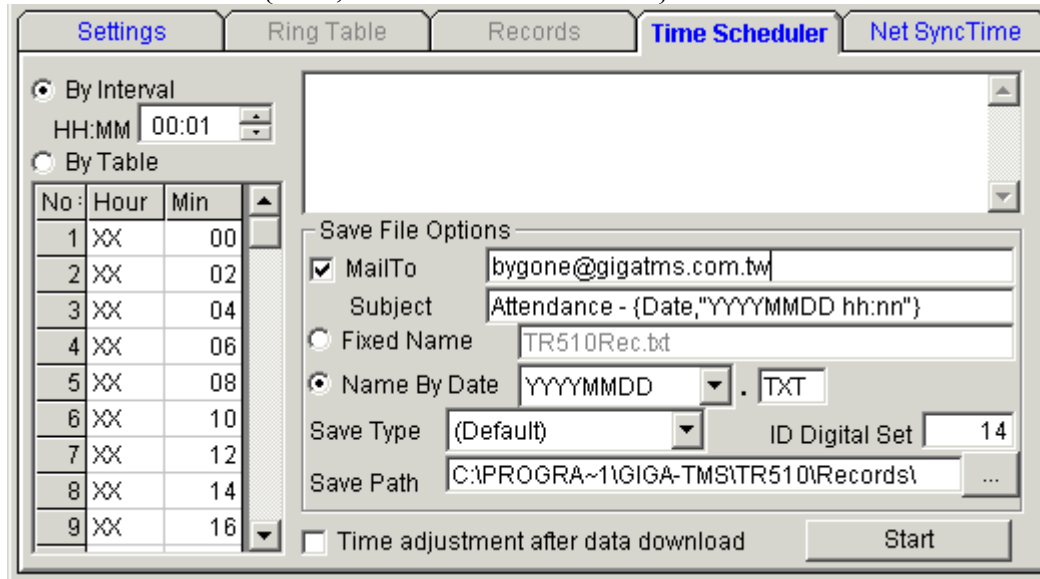
- (1). Mail To: E-Mail Address
- (2). Subject: You can add a date to subject in “{Date}” or “{Date[,“format parameter”]}”.

Parameter	Description	Parameter	Description
Y	Year	H	Hour
M	Month	N	Minute
D	Day	S	Second

Example:

“Attendance – {Date}” = “Attendance – 2003/4/25”

“Attendance – {Date, “YYYYMMDD hh:nn”}” = “Attendance - 20030425 17:48”



TR510 Revision Notes

B. Select the file name and file type

This option is work on “Time Scheduler” and “Records”

(1). Select File Name

- Fixed Name
- Name by Date

(2). Select File Type

Use “ID Digital Set” to set the User ID length only with the (Default) option.

Settings Ring Table Records **Time Scheduler** Net SyncTime

☒ By Interval HH:MM 00:01
☐ By Table

No	Hour	Min
1	XX	00
2	XX	02
3	XX	04
4	XX	06
5	XX	08
6	XX	10
7	XX	12
8	XX	14
9	XX	16

Save File Options

☒ MailTo bygone@gigatms.com.tw
Subject Attendance - {Date,"YYYYMMDD hh:nn"}
☐ Fixed Name TR510Rec.txt
☒ Name By Date YYYYMMDD

Save Type (Default) ID Digital Set 14
(Default) MS\TR510\Records\ ...
TR40XX

☐ Time adjustment after data download Start

Settings Ring Table **Records** Time Scheduler Net SyncTime

NO#	Card No	Event	Date	Time
-----	---------	-------	------	------

00000 / 00000

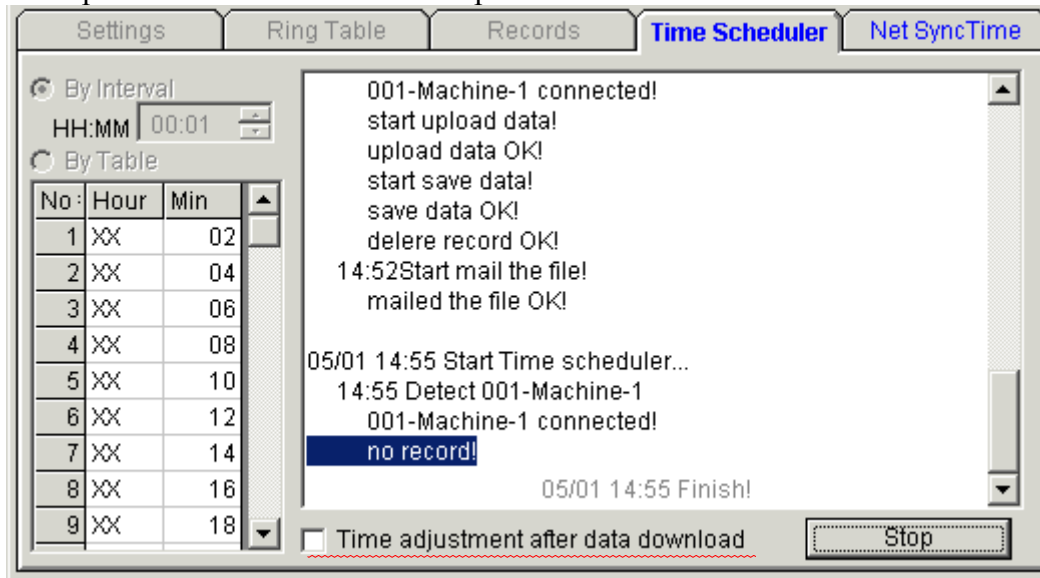
Save Type (Default) ID Digital Set 14

Upload Database Save Open

TR510 Revision Notes

3. Time Scheduler - Time adjustment after data download (Additional)

If “Time adjustment after data download” is selected, it’s will auto-adjust the time of each machine according to the preset network time after the operation is done.



4. Net SyncTime (Additional)

“Net SyncTime” will derive DATE/TIME from network time server. If your PC does not connect with any network, “Net SyncTime” will derive DATE/TIME from local PC.

A. Server information from the file “TimeServer.ini”

B. Active Server

- (1). Maximum number of Active Server allowed is 5
- (2). Auto scan “Active Server” list to connect with a better server.
- (3). Get Greenwich Mean Time from the better server
- (4). Use “Remove” button to move Active Server to Unused Server

C. Unused Server

You can use “Add” button to add Unused Server to Active Server

