

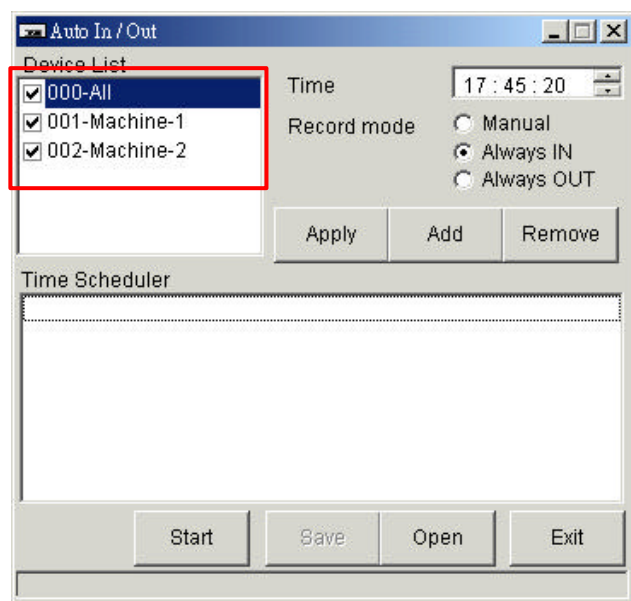
Auto In/Out Quick Start

Overview

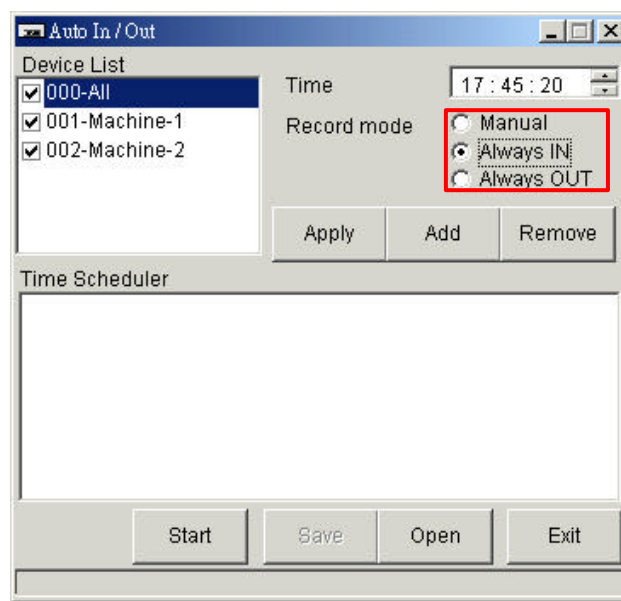
The AutoIO can set machine to "Always In", "Always Out" or "Manual" three kinds of recording modes at specific time from a scheduler.

Add new job

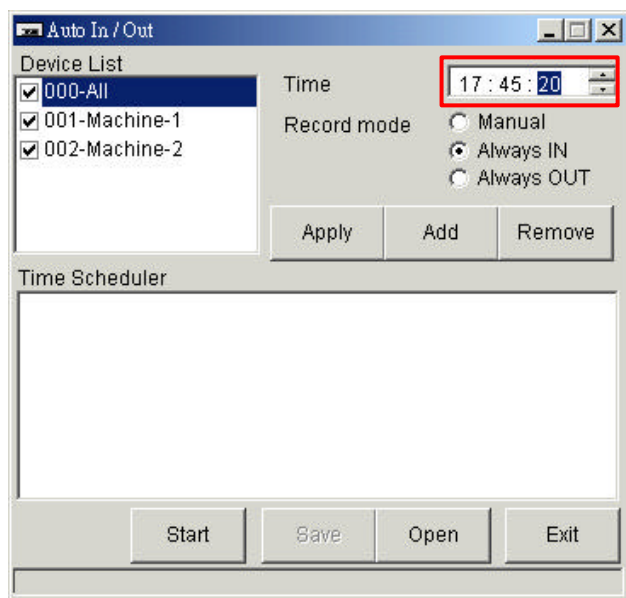
Step 1 – Choose machine



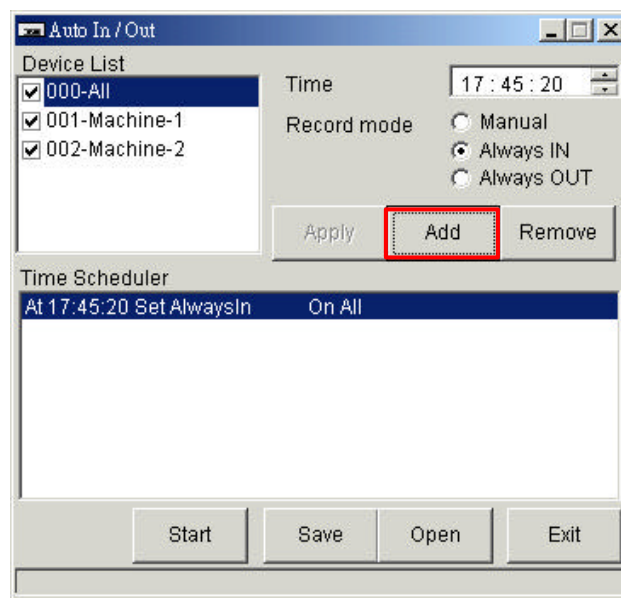
Step 3 – Chooses the recording mode



Step 2 – Inputs time

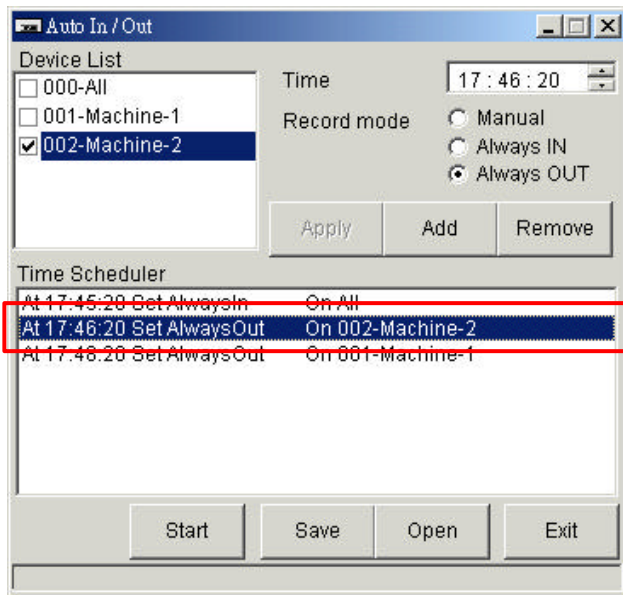


Step 4 – Add a job

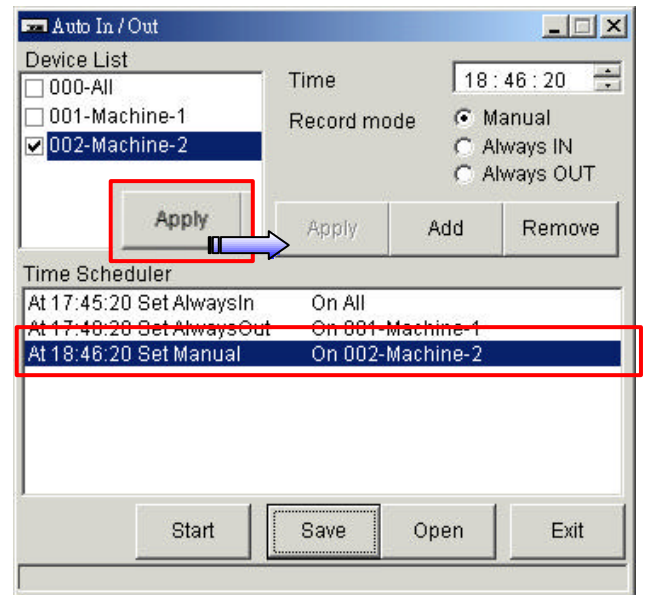


Modify a job

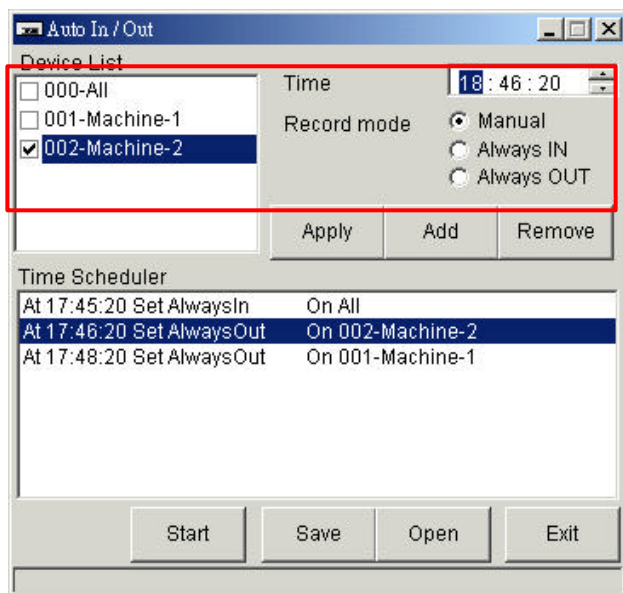
Step 1 – Choose a job



Step 3 – Apply

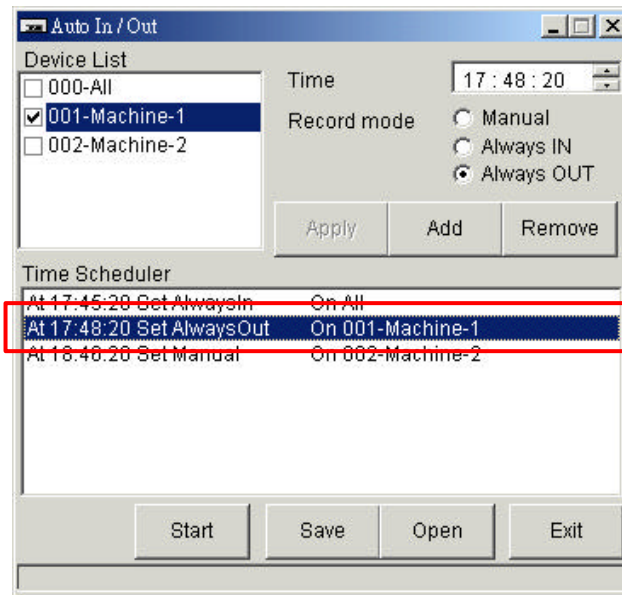


Step 2 – Modify

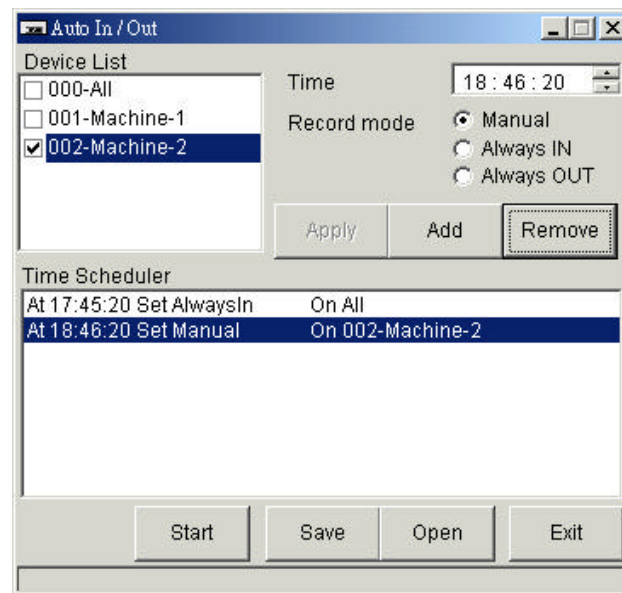


Delete a job

Step 1 – Choose a job

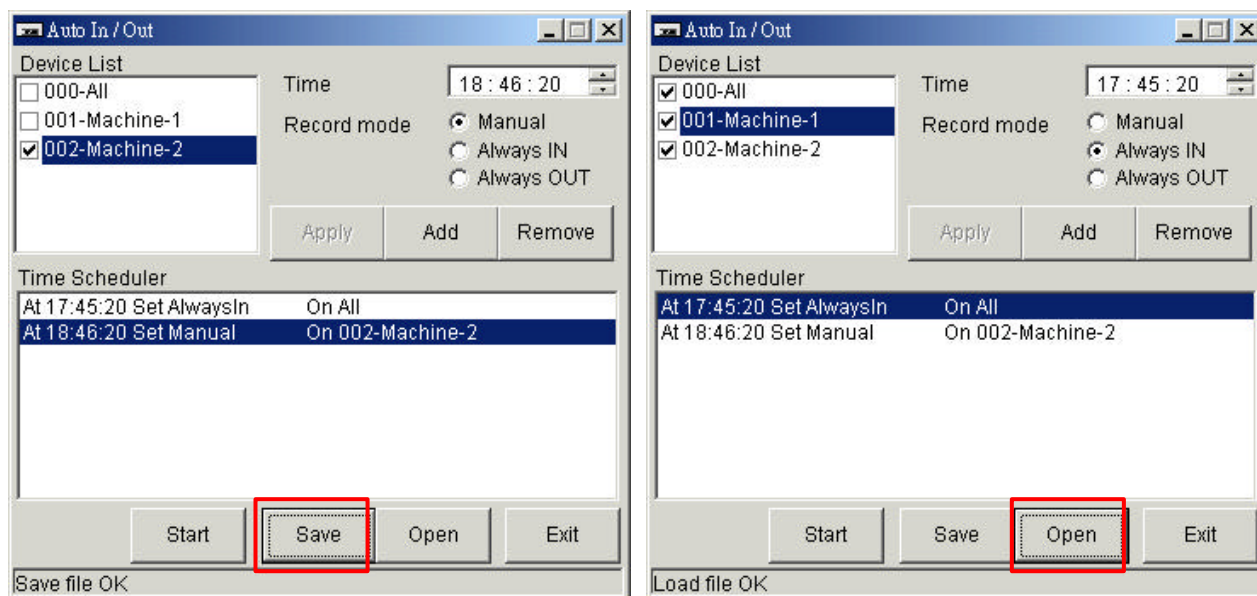


Step 2 – Remove a job



Save/Load settings

Click "Save" or "Open" button to save or load settings from "AutoIO.txt" file.



Start scheduler

Click "Start" button to start the time scheduler, and you can also click "Stop" button to stop the time scheduler.

