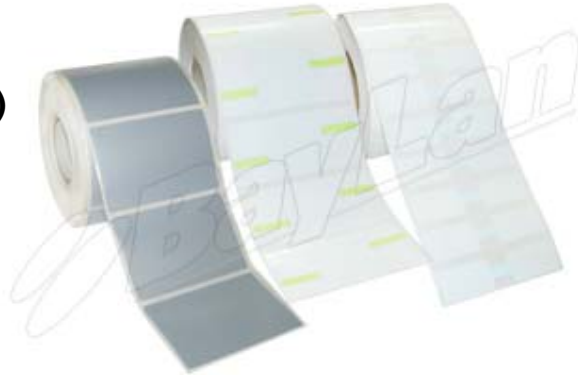


Synthetic Labels

(Different Sizes Ordering Information On Separate page)



Synthetic label materials are those created by synthetic fibers and are more durable than standard matt / semi-gloss labels. There are an enormous amount of different synthetic label materials available in matching the right material for your requirements.

POLYESTER – Polyester (PE) films are suited to high quality long lasting applications requiring resistance to heat, water, oil and chemicals. Typical applications include asset and serial number labels, cosmetics, appliances, electrical equipment and instruments, instruction tags on home and industrial utilities, drum and logistics labelling.

Polyester is the "Rolls Royce" of durable face stocks. It will probably outlive us all! Think labels on car engines and dishwashers. Etiquette even provides polyester synthetic labels for the Ministry of Defence. If you require longevity in harsh conditions, look no further than polyester for the ultimate in synthetic label performance.

POLYETHYLENE - Polyethylene (PE) films are suited to applications that require resistance to water, oil and chemicals. Common applications include labelling test tubes, vials, chemical drums and products with a highly curved surface. Polypropylene offers excellent resistance to moisture and chemicals whether on household and car care products, toiletries, cosmetics, industrial lubricants, toys or general purpose appliances. Durable and eye-catching, not only luxury labels, but promotional ones are produced in this synthetic label material, and don't forget the "no label" look achieved on clear film.

POLYPROPYLENE– Polypropylene (PP) films are suited to applications requiring resistance to water, oil and chemicals. Polypropylene labels offer a long term solution to labelling packaging materials, patient and laboratory samples and tear-resistant shelf edge labels. Polyethylene in white, transparent, and silver is ideal for application to squeezable bottles. Think ketchup, mayonnaise, and shower gel. Etiquette provides synthetics that perform, keeping both shape and appearance - the ultimate in flexibility.

As a basic rule of thumb, anything you can achieve creatively with paper, can also be achieved by us with a synthetic label.

Synthetic Silver Labels

| ComCode | ComCode/ Product ID | Width | Length | Row | Labels | Color | Material | Core |
|---------|------------------------|-------|--------|-----|--------|--------|----------|------|
| 002462 | LTTPE10380251S | 38mm | 25mm | 1up | 1000 | Silver | PE | 1.5" |
| 002463 | LTTPE10500251S | 50mm | 25mm | 1up | 1000 | Silver | PE | 1" |
| 002464 | LTTPE10380121S | 38mm | 12mm | 1up | 2000 | Silver | PE | 1.5" |
| 002465 | LTTPE10760501S | 76mm | 50mm | 1up | 1000 | Silver | PE | 1.5" |
| 002466 | LTTPE11000501S | 100mm | 50mm | 1up | 1000 | Silver | PE | 1.5" |

that have small links and wrap around to be trapped between the ends of the label.

Synthetic Jewellery Colour Labels

| ComCode | Product ID | Width | Length | Row | Labels | Color | Material | Core |
|---------|-----------------|-------|--------|-----|--------|--------|----------|------|
| 002468 | LTTPE10830372W | 83mm | 37mm | 2up | 2000 | White | PE | 1.5" |
| 002469 | LTTPE10830372B | 83mm | 37mm | 2up | 2000 | Blue | PE | 1.5" |
| 002470 | LTTPE10830372G | 83mm | 37mm | 2up | 2000 | Gold | PE | 1.5" |
| 002471 | LTTPE10830372GN | 83mm | 37mm | 2up | 2000 | Green | PE | 1.5" |
| 002472 | LTTPE10830372M | 83mm | 37mm | 2up | 2000 | Maroon | PE | 1.5" |
| 002473 | LTTPE10830372P | 83mm | 37mm | 2up | 2000 | Pink | PE | 1.5" |
| 002474 | LTTPE10830372S | 83mm | 37mm | 2up | 2000 | Silver | PE | 1.5" |

This style of Jewellery label has flaps that fold over the adhesive in the middle to protect the Jewellery from contact with adhesive

Synthetic Jewellery Labels

| ComCode | Product ID | Width | Length | Row | Labels | Color | Material | Core |
|---------|----------------|-------|--------|-----|--------|-------|----------|------|
| 002475 | LTTPE10650152W | 65mm | 15mm | 1up | 2000 | White | PE | 1.5" |

** Customize size available on request.*

Specifications are subject to change without prior notice with advancement in technology.