

BFA2211QS5 Fiber Coupler, SC / SC (Plastic Body), Singlemode, Ceramic Alignment Sleeve

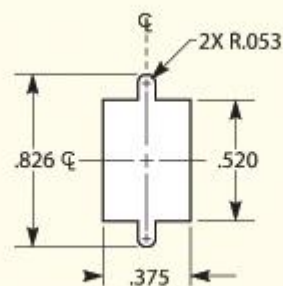


These BayLan simplex plastic SC couplers are designed for mounting in standard rectangular cut out style panels. This series features either bronze or ceramic alignment sleeves to meet your specific design requirements. Additionally, these couplers can be used with PC or UPC style fiber connectors.

FEATURES

- Used to connect either PC or UPC polished SC Fiber cables
- Plastic body provides a light weight yet durable solution
- Stainless steel mounting clips allow for easy snap in installation
- Ceramic alignment sleeve supports Singlemode applications

ADAPTOR MOUNTING DIAGRAM



Dimensions are in inches.

Specifications are subject to change without prior notice with advancement in technology.